



City of Laguna Niguel



CVRA Meeting #3
Draft Maps

November 7, 2023

Agenda

Things we will cover:

- Traditional Districting/Redistricting Principles
- Public Testimony
- Draft Maps
 - A, A2, B & C
- Public Hearing Schedule
- Next Steps

Required Redistricting Criteria

Traditional redistricting principles used throughout the country and written into state law

There are a number of criteria that are required under the FAIR MAPS Act (ranked):

- Relatively equal size - people, not citizens, all ages
- Contiguous – districts should not hop/jump
- Maintain “*communities of interest*”
- Easily identifiable and understandable lines, following natural and man-made boundaries
- Keep districts compact – appearance/function

Publicly Submitted Maps

All maps submitted by the community have been reviewed by the City Council prior to today's meeting

The public submitted 16 maps (prior to the mandatory 7-day posting period):

- 11 maps considered viable/viable with technical fix
- 3 maps considered viable with minor changes
- 2 maps considered non-viable

The Mayor and Councilmembers may choose to discuss and/or uplift as drafts any of these maps.

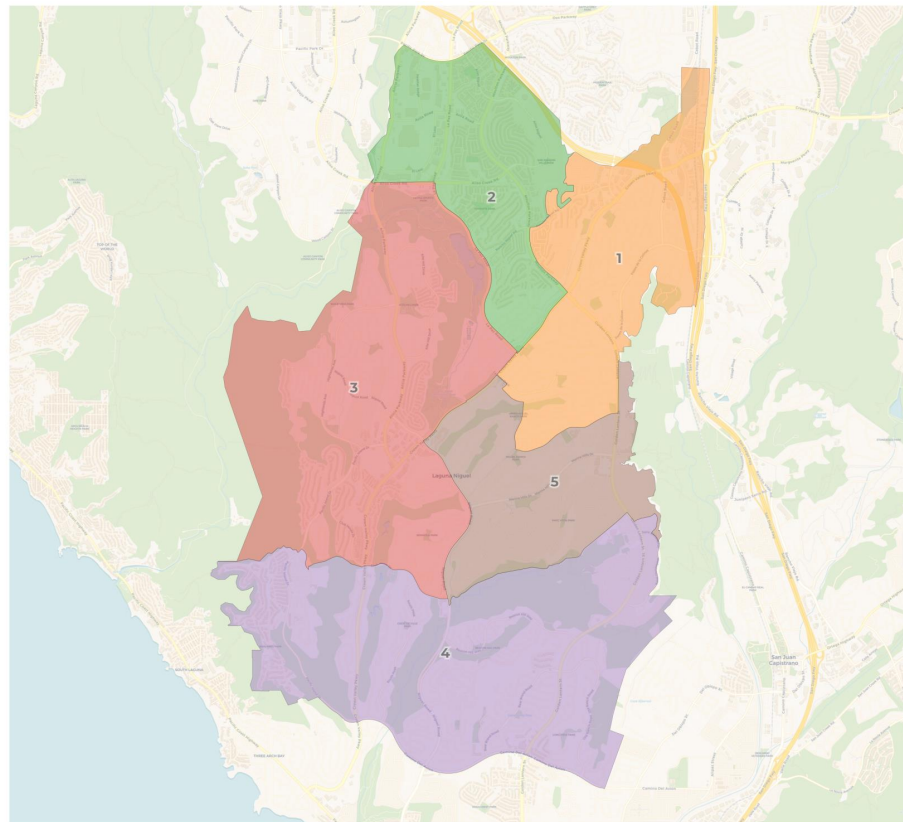
Draft Maps

Draft Map A

- Based on DistrictR ID: 199726

City of Laguna Niguel
District ID 199726

 REDISTRICTING
PARTNERS



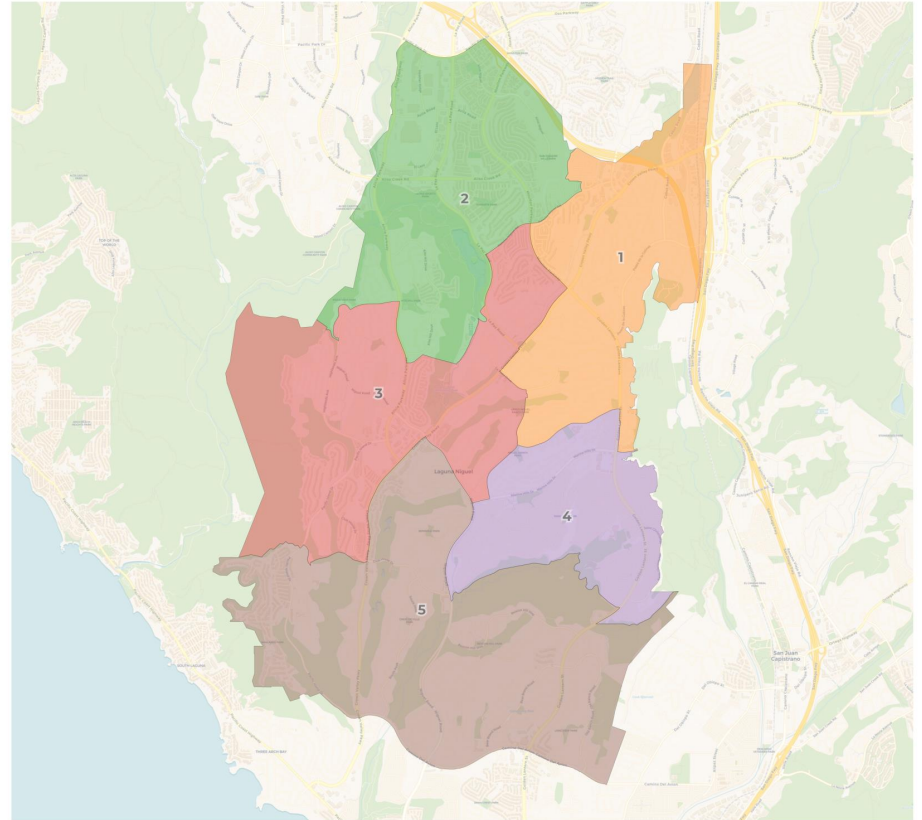
Draft Maps

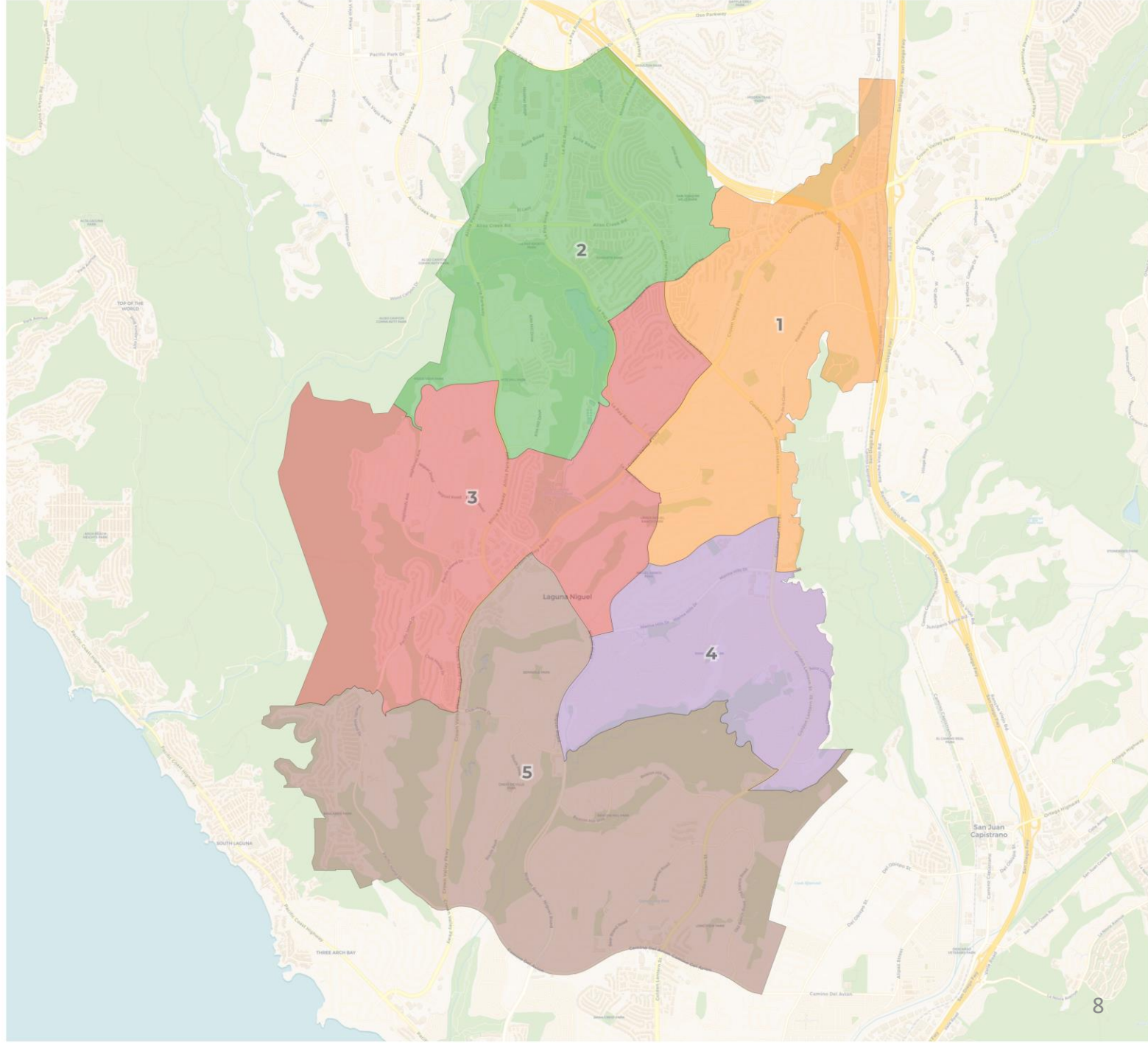
Draft Map A

- Based on DistrictR ID: 199726
- Adjusted to follow main thoroughfares and maintain Homeowners Associations as much as possible.

City of Laguna Niguel
Draft A

 REDISTRICTING
PARTNERS





2020 Census

	1	2	3	4	5
Population	12,937	13,386	12,987	12,680	12,427
Deviation	54	503	104	-203	-456
Deviation %	0.4%	3.9%	0.8%	-1.6%	-3.5%
Other	9,627	8,952	9,806	8,095	10,314
Other %	74.4%	66.9%	75.5%	63.8%	83.0%
Latino	1,961	2,244	1,765	3,490	1,077
Latino %	15.2%	16.8%	13.6%	27.5%	8.7%
Asian	1,169	2,040	1,246	905	949
Asian %	9.0%	15.2%	9.6%	7.1%	7.6%
Black	180	150	170	190	87
Black %	1.4%	1.1%	1.3%	1.5%	0.7%

Citizen Voting Age Population (CVAP)

	1	2	3	4	5
Total CVAP	9,082	10,062	9,866	8,580	10,620
Other CVAP	6,893	6,892	7,240	6,575	9,072
Other CVAP %	75.9%	68.5%	73.4%	76.6%	85.4%
Latino CVAP	1,003	1,217	1,025	1,515	835
Latino CVAP %	11.0%	12.1%	10.4%	17.7%	7.9%
Asian CVAP	853	1,832	1,282	425	660
Asian CVAP %	9.4%	18.2%	13.0%	5.0%	6.2%
Black CVAP	333	121	319	65	53
Black CVAP %	3.7%	1.2%	3.2%	0.8%	0.5%

2020 Census

	1	2	3	4	5
Population	12,937	13,386	12,987	12,680	12,427
Deviation	54	503	104	-203	-456
Deviation %	0.4%	3.9%	0.8%	-1.6%	-3.5%
Other	9,627	8,952	9,806	8,095	10,314
Other %	74.4%	Total Deviation: 7.4%		63.8%	83.0%
Latino	1,961			3,490	1,077
Latino %	15.2%	16.8%	13.6%	27.5%	8.7%
Asian	1,169	2,040	1,246	905	949
Asian %	9.0%	15.2%	9.6%	7.1%	7.6%
Black	180	150	170	190	87
Black %	1.4%	1.1%	1.3%	1.5%	0.7%

Citizen Voting Age Population (CVAP)

	1	2	3	4	5
Total CVAP	9,082	10,062	9,866	8,580	10,620
Other CVAP	6,893	6,892	7,240	6,575	9,072
Other CVAP %	75.9%	68.5%	73.4%	76.6%	85.4%
Latino CVAP	1,003	1,217	1,025	1,515	835
Latino CVAP %	11.0%	12.1%	10.4%	17.7%	7.9%
Asian CVAP	853	1,832	1,282	425	660
Asian CVAP %	9.4%	18.2%	13.0%	5.0%	6.2%
Black CVAP	333	121	319	65	53
Black CVAP %	3.7%	1.2%	3.2%	0.8%	0.5%

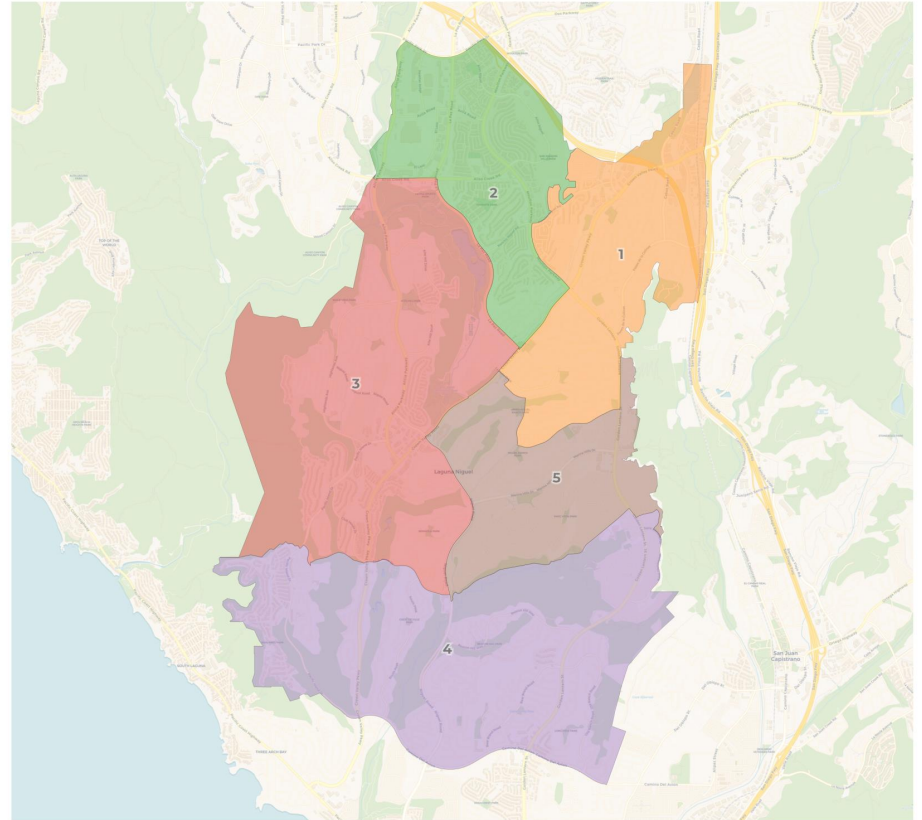
Draft Maps

Draft Map A2

- Also based on DistrictR ID: 199726

City of Laguna Niguel
DistrictR ID 199726

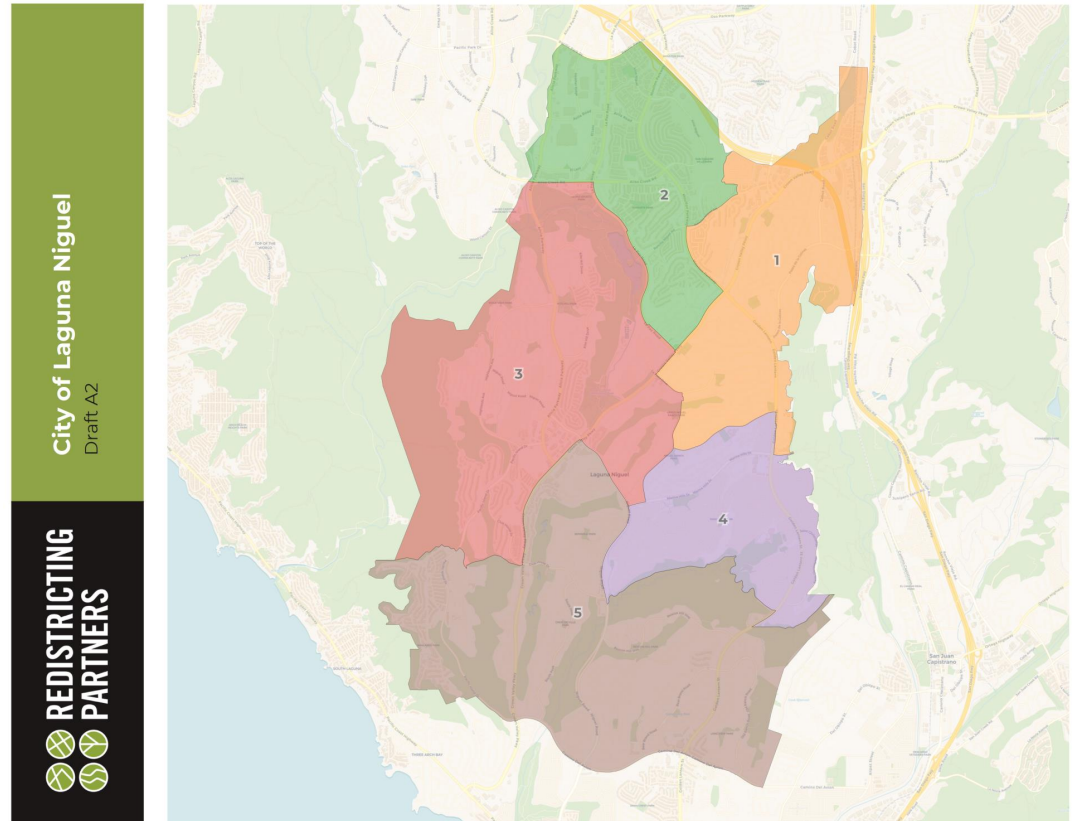
 REDISTRICTING
PARTNERS

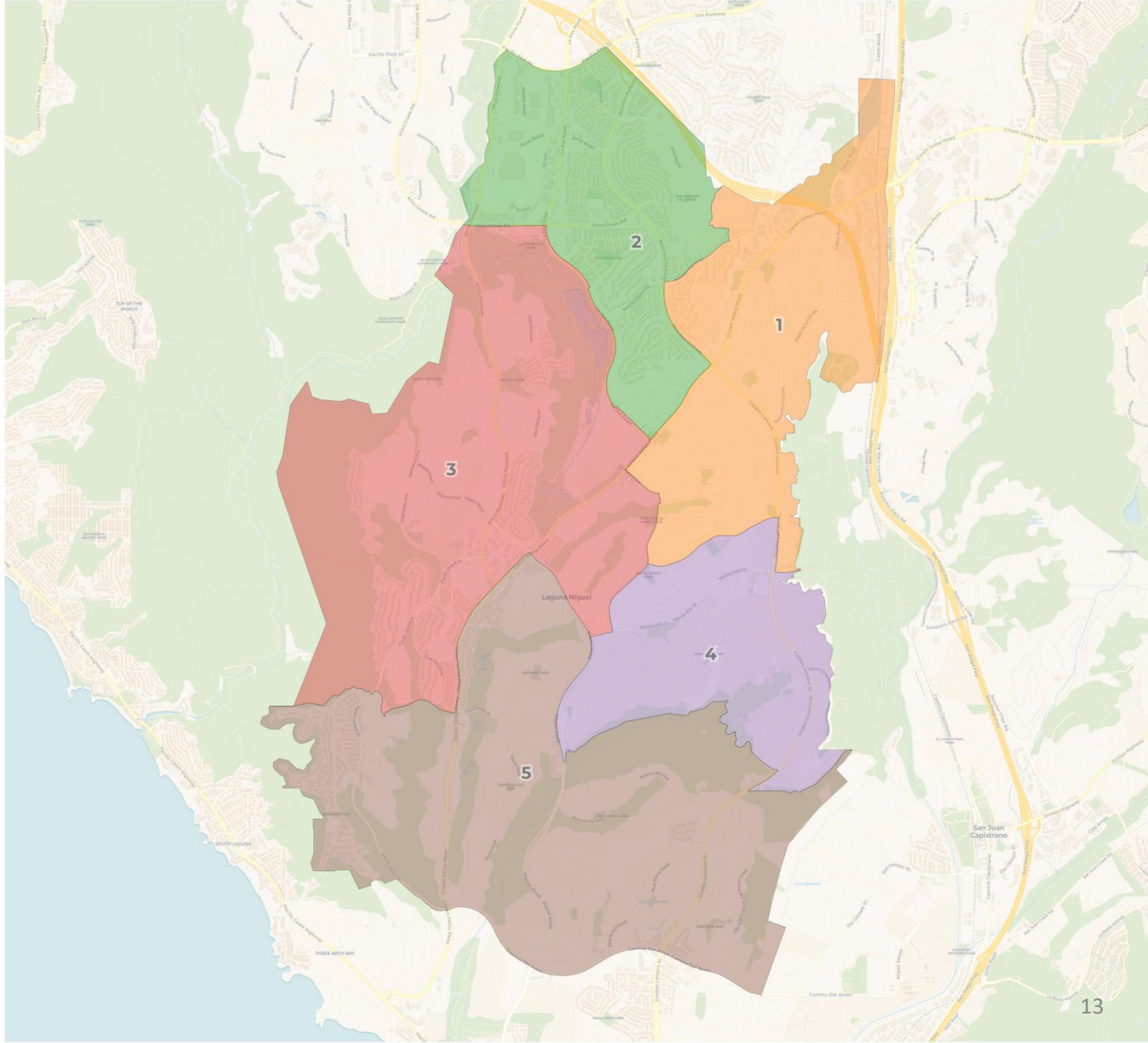


Draft Maps

Draft Map A2

- Also based on DistrictR ID: 199726
- Adjusted to follow main thoroughfares and maintain Homeowners Associations as much as possible. Alternative version of District 2.





2020 Census

	1	2	3	4	5
Population	12,937	13,518	12,855	12,680	12,427
Deviation	54	635	-28	-203	-456
Deviation %	0.4%	4.9%	-0.2%	-1.6%	-3.5%
Other	9,627	9,062	9,696	8,095	10,314
Other %	74.4%	67.0%	75.4%	63.8%	83.0%
Latino	1,961	2,354	1,655	3,490	1,077
Latino %	15.2%	17.4%	12.9%	27.5%	8.7%
Asian	1,169	1,971	1,315	905	949
Asian %	9.0%	14.6%	10.2%	7.1%	7.6%
Black	180	131	189	190	87
Black %	1.4%	1.0%	1.5%	1.5%	0.7%

Citizen Voting Age Population (CVAP)

	1	2	3	4	5
Total CVAP	9,082	9,155	10,773	8,580	10,620
Other CVAP	6,893	6,317	7,815	6,575	9,072
Other CVAP %	75.9%	69.0%	72.5%	76.6%	85.4%
Latino CVAP	1,003	1,175	1,067	1,515	835
Latino CVAP %	11.0%	12.8%	9.9%	17.7%	7.9%
Asian CVAP	853	1,558	1,556	425	660
Asian CVAP %	9.4%	17.0%	14.4%	5.0%	6.2%
Black CVAP	333	105	335	65	53
Black CVAP %	3.7%	1.1%	3.1%	0.8%	0.5%

2020 Census

	1	2	3	4	5
Population	12,937	13,518	12,855	12,680	12,427
Deviation	54	635	-28	-203	-456
Deviation %	0.4%	4.9%	-0.2%	-1.6%	-3.5%
Other	9,627	9,062	9,696	8,095	10,314
Other %	74.4%	Total Deviation: 8.4%		63.8%	83.0%
Latino	1,961			3,490	1,077
Latino %	15.2%	17.4%	12.9%	27.5%	8.7%
Asian	1,169	1,971	1,315	905	949
Asian %	9.0%	14.6%	10.2%	7.1%	7.6%
Black	180	131	189	190	87
Black %	1.4%	1.0%	1.5%	1.5%	0.7%

Citizen Voting Age Population (CVAP)

	1	2	3	4	5
Total CVAP	9,082	9,155	10,773	8,580	10,620
Other CVAP	6,893	6,317	7,815	6,575	9,072
Other CVAP %	75.9%	69.0%	72.5%	76.6%	85.4%
Latino CVAP	1,003	1,175	1,067	1,515	835
Latino CVAP %	11.0%	12.8%	9.9%	17.7%	7.9%
Asian CVAP	853	1,558	1,556	425	660
Asian CVAP %	9.4%	17.0%	14.4%	5.0%	6.2%
Black CVAP	333	105	335	65	53
Black CVAP %	3.7%	1.1%	3.1%	0.8%	0.5%

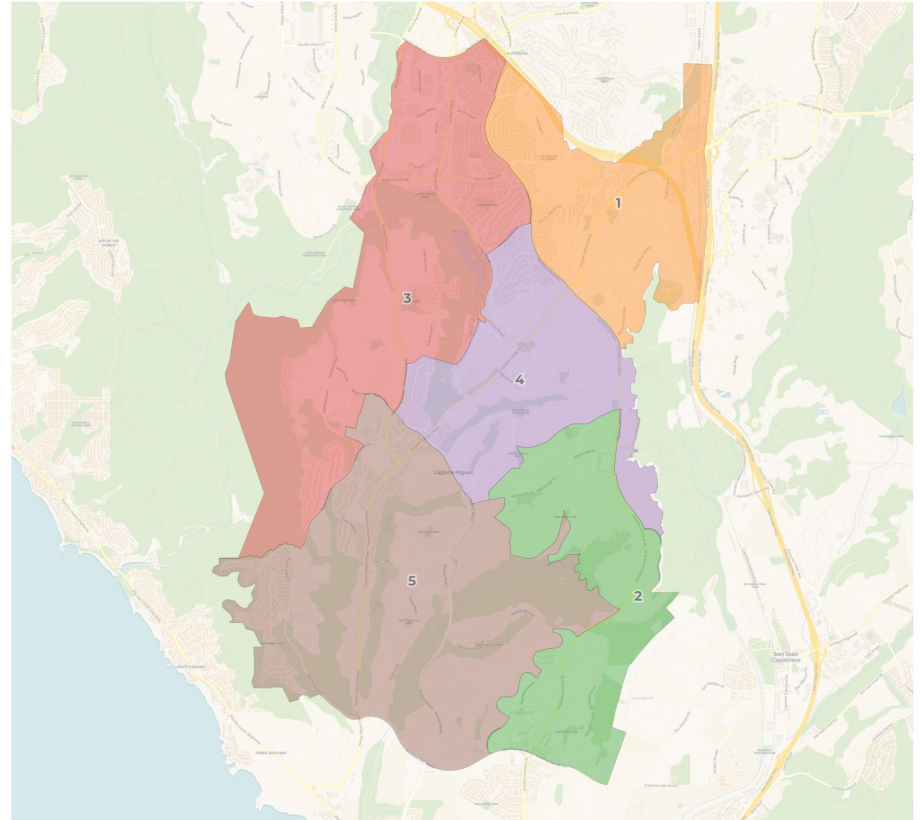
Draft Maps

Draft Map B

- Based on DistrictR ID: 200931

City of Laguna Niguel
District ID 200931

 REDISTRICTING
PARTNERS



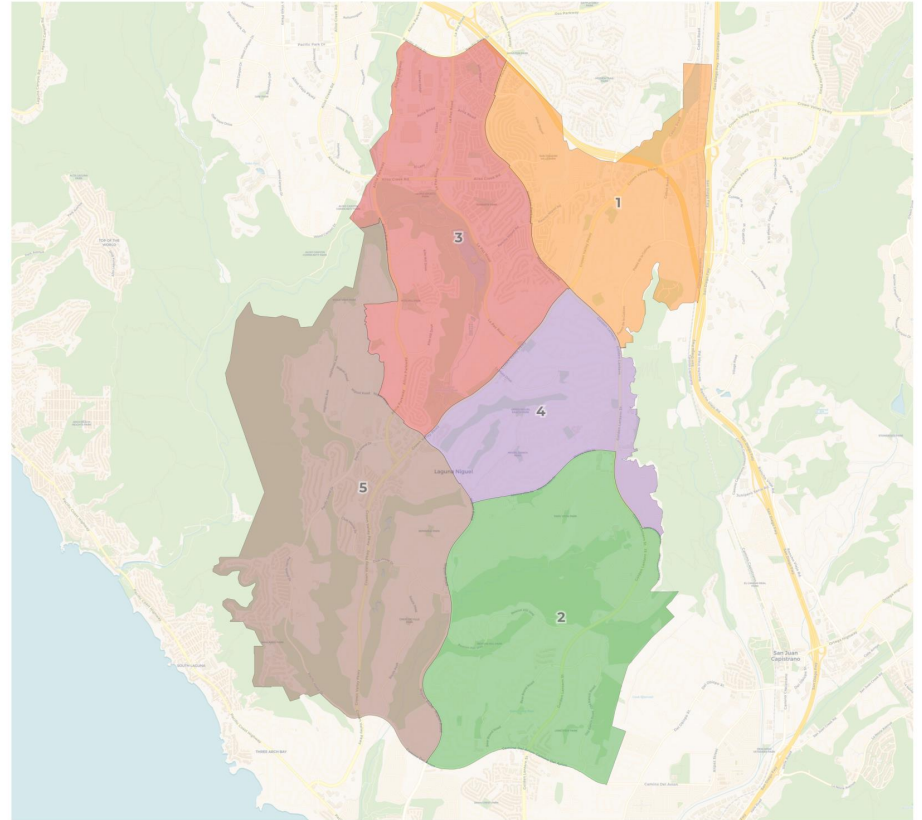
Draft Maps

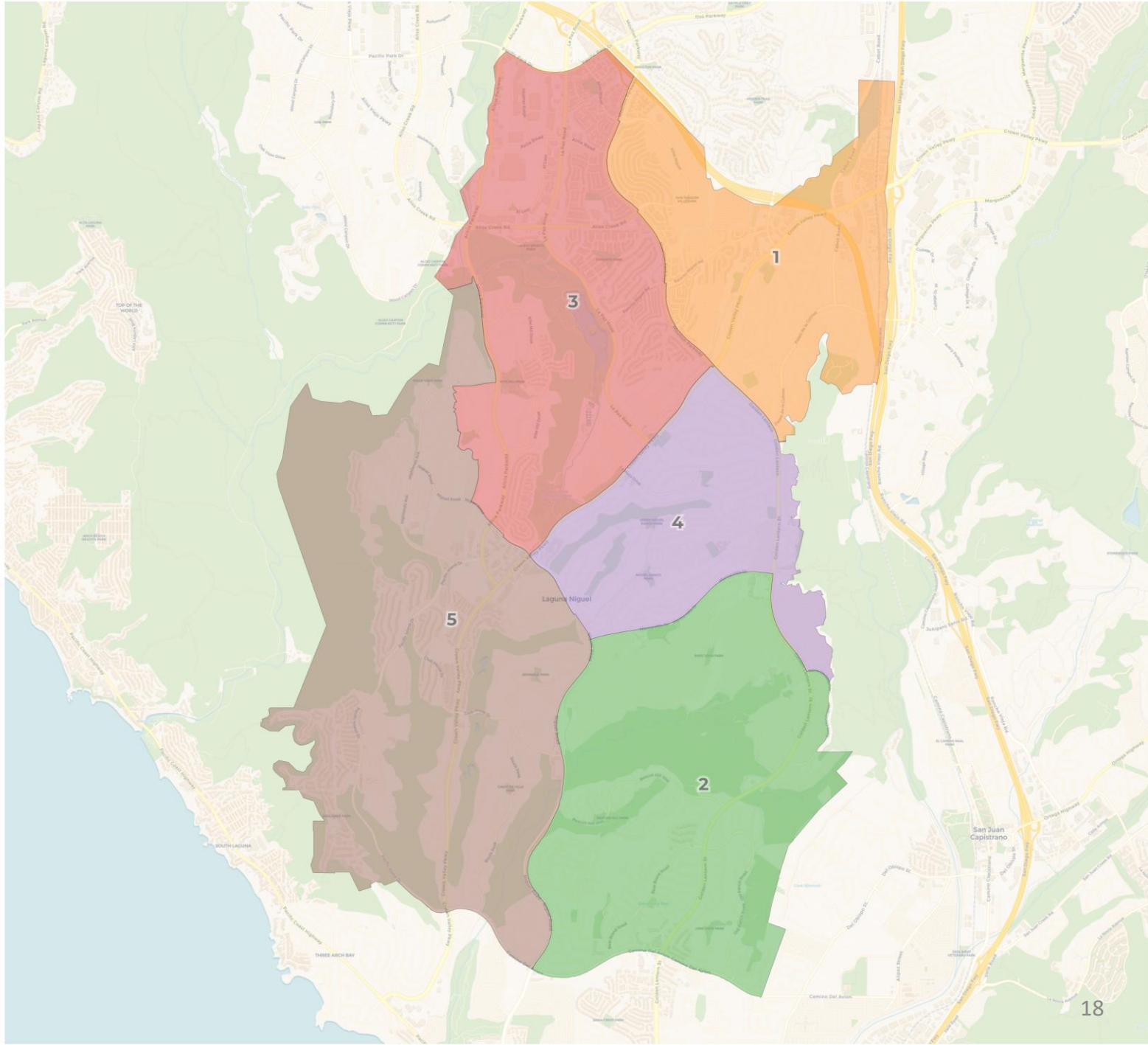
Draft Map B

- Based on DistrictR ID: 200931
- Changed to create a middle split on the southern portion of the city.
 - Niguel Road used as the divider
- Clean up lines to follow major roads.

City of Laguna Niguel
Draft B

 REDISTRICTING
PARTNERS





2020 Census

	1	2	3	4	5
Population	12,963	13,431	12,831	12,398	12,794
Deviation	80	548	-52	-485	-89
Deviation %	0.6%	4.3%	-0.4%	-3.8%	-0.7%
Other	8,860	10,023	9,230	8,422	10,259
Other %	68.3%	74.6%	71.9%	67.9%	80.2%
Latino	2,147	2,169	1,988	2,894	1,339
Latino %	16.6%	16.1%	15.5%	23.3%	10.5%
Asian	1,761	1,112	1,458	915	1,063
Asian %	13.6%	8.3%	11.4%	7.4%	8.3%
Black	195	127	155	167	133
Black %	1.5%	0.9%	1.2%	1.3%	1.0%

Citizen Voting Age Population (CVAP)

	1	2	3	4	5
Total CVAP	8,542	10,581	9,676	8,709	10,702
Other CVAP	5,753	8,451	7,041	6,846	8,581
Other CVAP %	67.3%	79.9%	72.8%	78.6%	80.2%
Latino CVAP	1,143	1,394	984	1,125	949
Latino CVAP %	13.4%	13.2%	10.2%	12.9%	8.9%
Asian CVAP	1,311	681	1,508	655	897
Asian CVAP %	15.3%	6.4%	15.6%	7.5%	8.4%
Black CVAP	335	55	143	83	275
Black CVAP %	3.9%	0.5%	1.5%	1.0%	2.6%

2020 Census

	1	2	3	4	5
Population	12,963	13,431	12,831	12,398	12,794
Deviation	80	548	-52	-485	-89
Deviation %	0.6%	4.3%	-0.4%	-3.8%	-0.7%
Other	8,860	10,023	9,230	8,422	10,259
Other %	68.3%	Total Deviation: 8.1%			67.9%
Latino	2,147				1,339
Latino %	16.6%	16.1%	15.5%	23.3%	10.5%
Asian	1,761	1,112	1,458	915	1,063
Asian %	13.6%	8.3%	11.4%	7.4%	8.3%
Black	195	127	155	167	133
Black %	1.5%	0.9%	1.2%	1.3%	1.0%

Citizen Voting Age Population (CVAP)

	1	2	3	4	5
Total CVAP	8,542	10,581	9,676	8,709	10,702
Other CVAP	5,753	8,451	7,041	6,846	8,581
Other CVAP %	67.3%	79.9%	72.8%	78.6%	80.2%
Latino CVAP	1,143	1,394	984	1,125	949
Latino CVAP %	13.4%	13.2%	10.2%	12.9%	8.9%
Asian CVAP	1,311	681	1,508	655	897
Asian CVAP %	15.3%	6.4%	15.6%	7.5%	8.4%
Black CVAP	335	55	143	83	275
Black CVAP %	3.9%	0.5%	1.5%	1.0%	2.6%

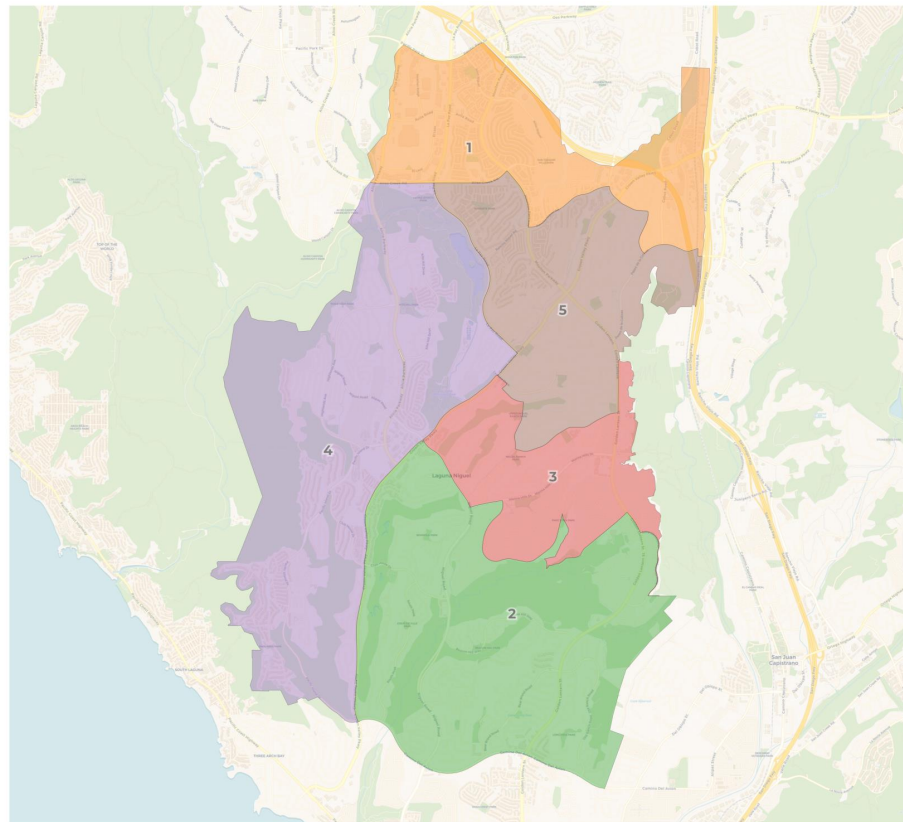
Draft Maps

Draft Map C

- Based on DistrictR ID: 200304
(named “Fair District Map”)

City of Laguna Niguel
District ID 203004 “Fair District
Map”

 REDISTRICTING
PARTNERS



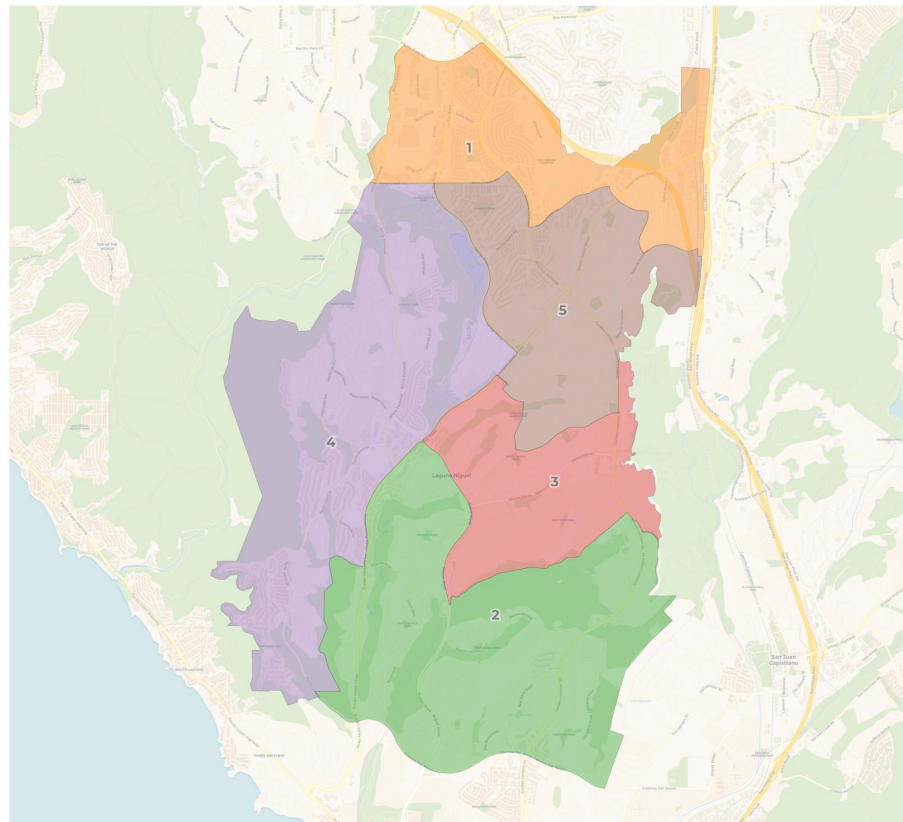
Draft Maps

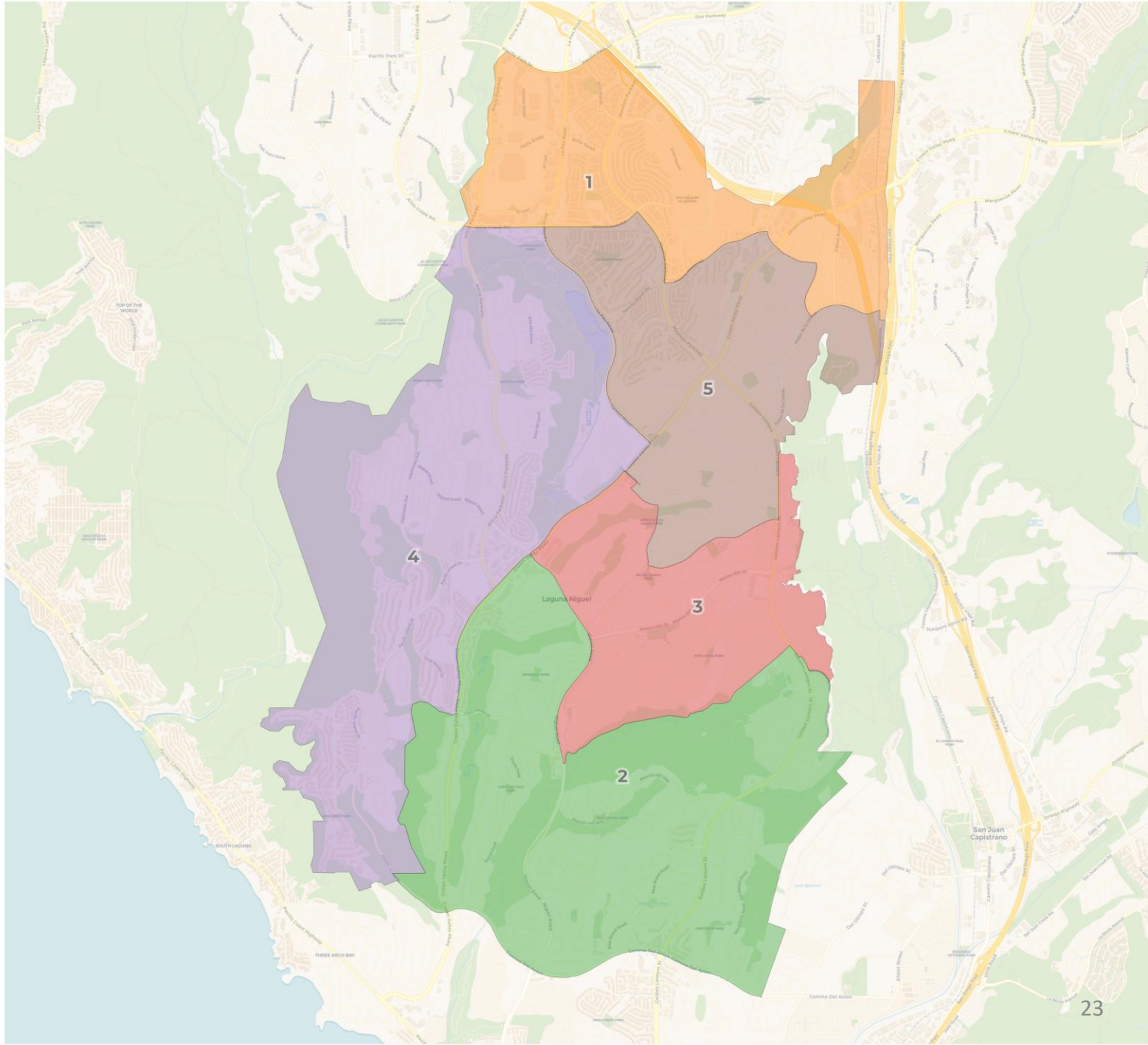
Draft Map C

- Based on DistrictR ID: 200304 (named “Fair District Map”)
- Changes were made to further balance districts and follow main thoroughfares.

City of Laguna Niguel
Draft C

 REDISTRICTING
PARTNERS





2020 Census

	1	2	3	4	5
Population	12,951	12,387	13,353	13,143	12,583
Deviation	68	-496	470	260	-300
Deviation %	0.5%	-3.9%	3.6%	2.0%	-2.3%
Other	8,267	10,172	8,495	10,076	9,784
Other %	63.8%	Total Deviation: 7.5%		76.7%	77.8%
Latino	2,564			1,539	1,543
Latino %	19.8%	9.6%	27.7%	11.7%	12.3%
Asian	1,895	932	941	1,370	1,171
Asian %	14.6%	7.5%	7.0%	10.4%	9.3%
Black	225	93	216	158	85
Black %	1.7%	0.8%	1.6%	1.2%	0.7%

Citizen Voting Age Population (CVAP)

	1	2	3	4	5
Total CVAP	8,449	10,481	9,225	11,053	9,002
Other CVAP	5,629	8,832	6,975	8,259	6,977
Other CVAP %	66.6%	84.3%	75.6%	74.7%	77.5%
Latino CVAP	1,156	851	1,785	934	869
Latino CVAP %	13.7%	8.1%	19.3%	8.5%	9.7%
Asian CVAP	1,314	715	405	1,550	1,068
Asian CVAP %	15.6%	6.8%	4.4%	14.0%	11.9%
Black CVAP	350	83	60	310	88
Black CVAP %	4.1%	0.8%	0.7%	2.8%	1.0%

City of Laguna Niguel

Districting Timeline

Proposed Schedule:

September 5, 2023	Public Hearing #1 (Pre-map)
September 19, 2023	Public Hearing #2 (Pre-map)
November 7, 2023	Public Hearing #3: Introduce Draft Maps
December 5, 2023	Public Hearing #4: Revised Draft Maps
January 2024	Public Hearing #5: Final Vote/Adoption

Next Steps

As the decision-making authority, the City Council will discuss which maps they want to move forward with. This includes any draft map or publicly submitted map.

Tonight, the City Council will:

- Receive and review public testimony.
- If desired, direct demographers to make any changes to maps or elevate a public submission to be a Draft Map.
- Select which maps to move forward to the next public hearing. Recommend to narrow down the maps to 1 – 3 viable options

Next Steps

As the decision-making authority, the City Council will discuss which maps they want to move forward with. This includes any draft map or publicly submitted map.

December 5 Public Hearing #4:

- Demographer will provide updated draft maps based on the City Council's direction.
- Continue to hear public testimony and review any more public submissions.
- City Council will provide feedback and further direction on changes to the draft maps, while narrowing down to their preferred map(s).



Summary of All Maps

Draft Maps

Draft Maps	Deviation
Draft A	7.4%
Draft A2	8.4%
Draft B	8.1%
Draft C	7.5%

Viable Public Maps

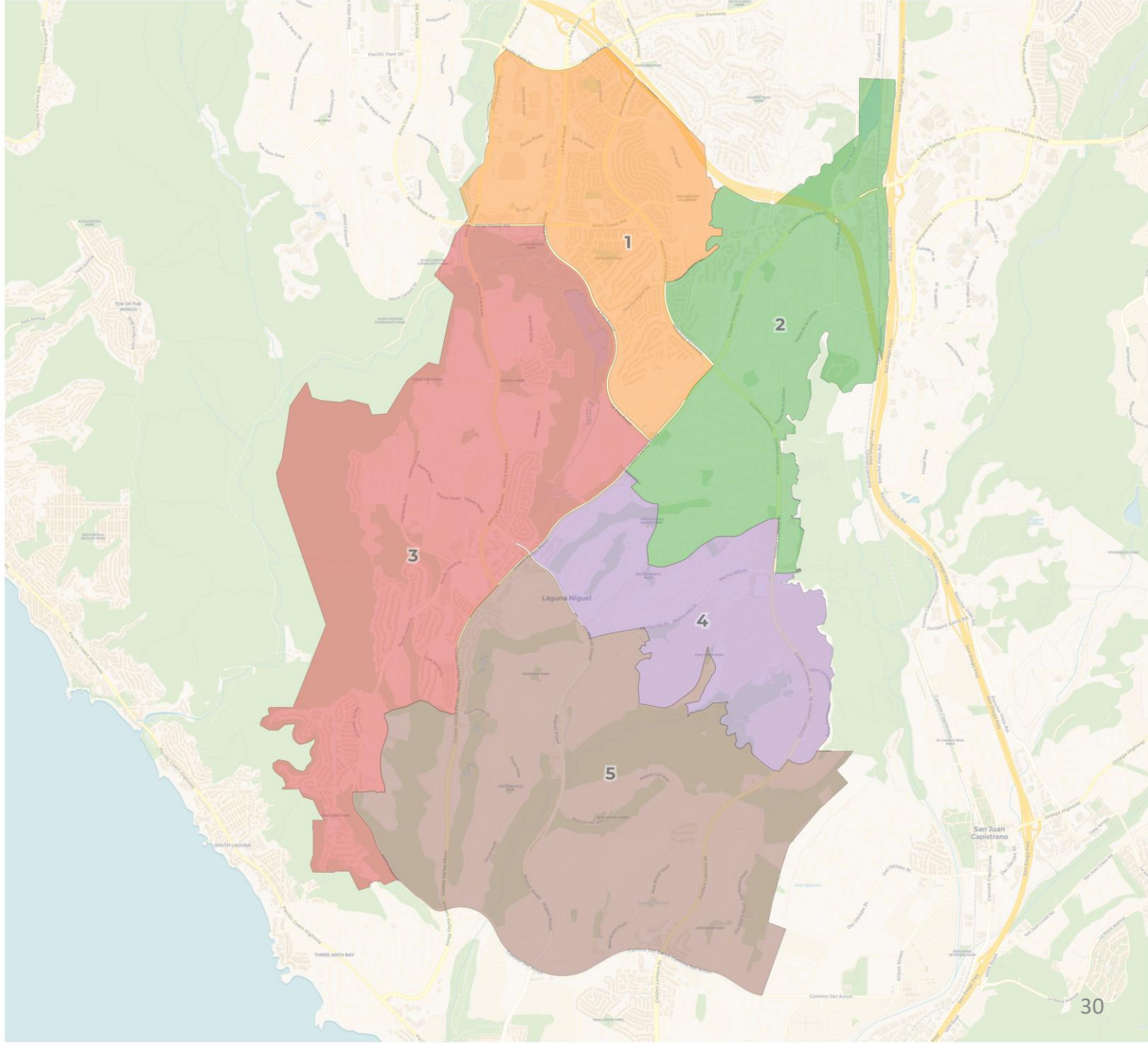
District ID	Deviation
203848	6.2%
203521 "Balanced Fair District Map"	2.4%
203079	5.7%
203004 "Fair District Map"	7.8%
201897	7.8%
201331	5.9%
200931	7.4%
199999	7.8%
199731	2.9%
199726	4.8%
198819	8.4%

Viable with Minor Changes

District ID	Deviation
198698	13.8%
198185 "Balanced Districts"	10.9%
197512	11.6%

Non-Viable Public Maps

District ID	Deviation
198783 "4 Districts"	N/A
Public Plan 1 (4 Districts)	N/A

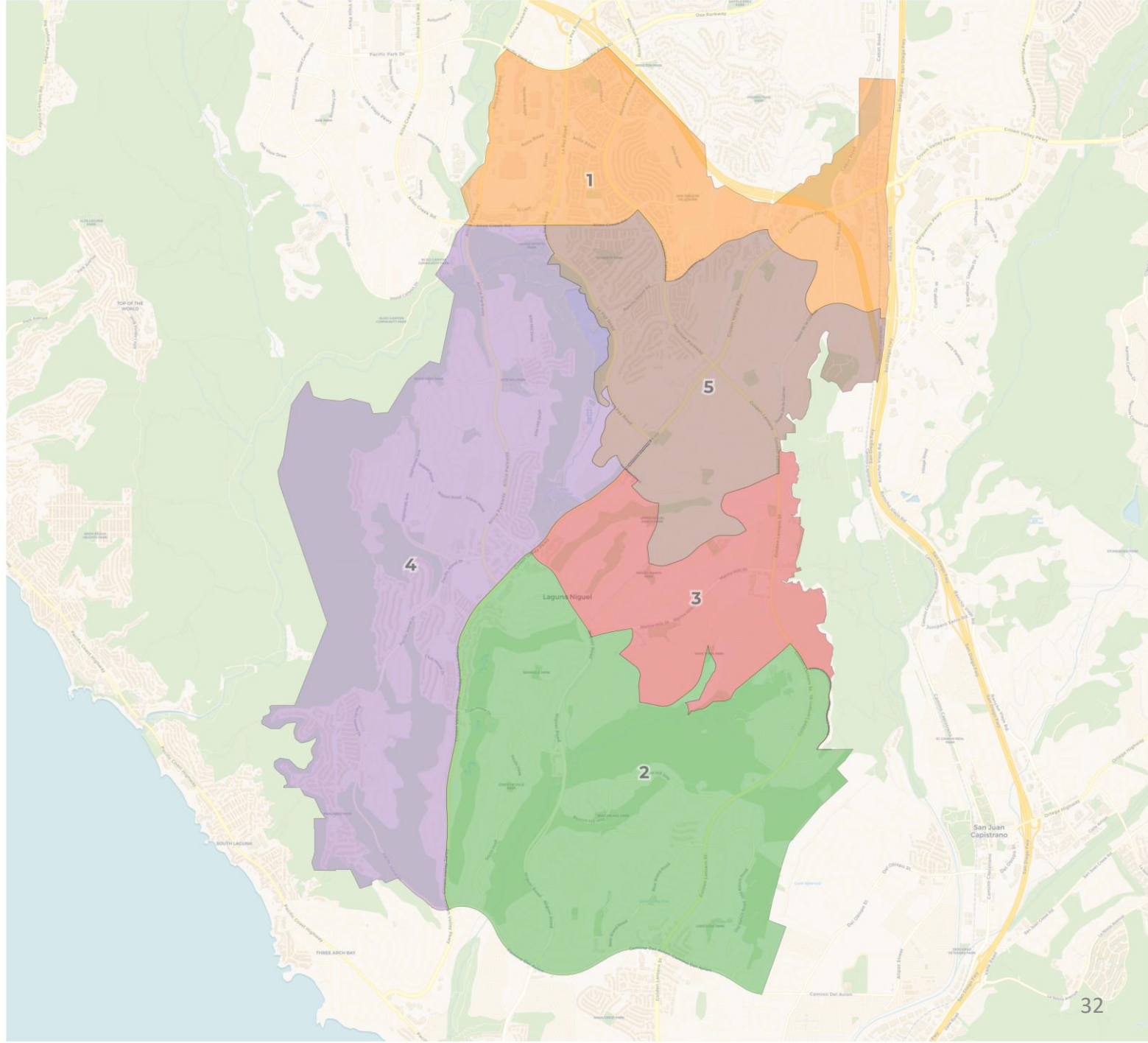


2020 Census

	1	2	3	4	5
Population	13,312	13,209	12,697	12,681	12,504
Deviation	431	328	-184	-200	-377
Deviation %	3.3%	2.5%	-1.4%	-1.6%	-2.9%
Other	8,924	9,811	9,700	8,015	10,339
Other %	67.0%	74.3%	76.4%	63.2%	82.7%
Latino	2,323	2,008	1,501	3,561	1,139
Latino %	17.5%	15.2%	11.8%	28.1%	9.1%
Asian	1,946	1,195	1,338	882	944
Asian %	14.6%	9.0%	10.5%	7.0%	7.5%
Black	119	195	158	223	82
Black %	0.9%	1.5%	1.2%	1.8%	0.7%

Citizen Voting Age Population (CVAP)

	1	2	3	4	5
Total CVAP	8,977	9,324	10,744	8,730	10,435
Other CVAP	6,191	7,080	7,992	6,554	8,855
Other CVAP %	69.0%	75.9%	74.4%	75.1%	84.9%
Latino CVAP	1,131	1,049	895	1,687	833
Latino CVAP %	12.6%	11.3%	8.3%	19.3%	8.0%
Asian CVAP	1,550	862	1,547	417	676
Asian CVAP %	17.3%	9.2%	14.4%	4.8%	6.5%
Black CVAP	105	333	310	72	71
Black CVAP %	1.2%	3.6%	2.9%	0.8%	0.7%

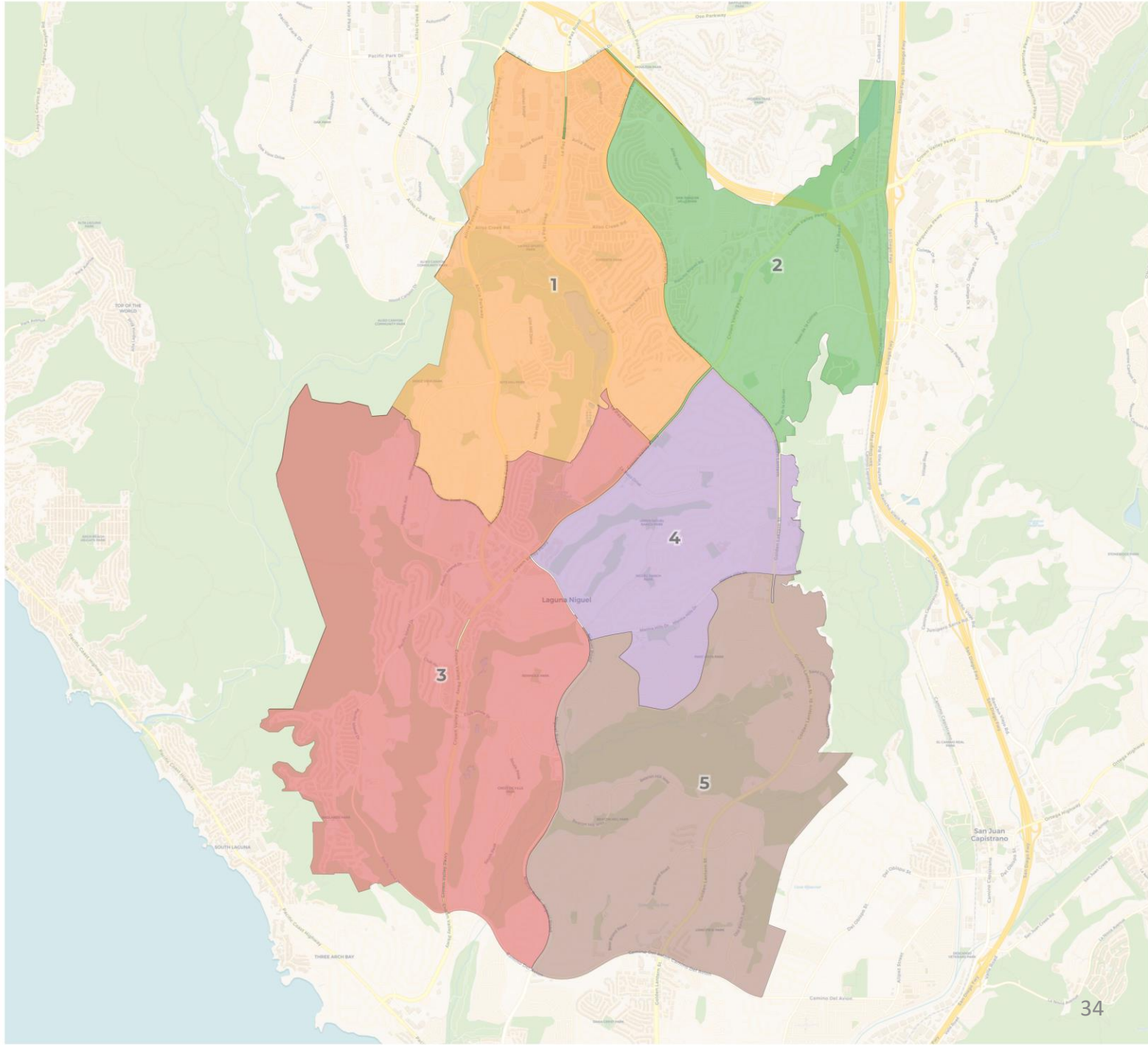


2020 Census

	1	2	3	4	5
Population	12,951	13,018	12,702	12,938	12,808
Deviation	68	135	-181	55	-75
Deviation %	0.5%	1.0%	-1.4%	0.4%	-0.6%
Other	8,267	10,683	7,956	9,992	9,896
Other %	63.8%	82.1%	62.6%	77.2%	77.3%
Latino	2,564	1,240	3,673	1,475	1,585
Latino %	19.8%	9.5%	28.9%	11.4%	12.4%
Asian	1,895	1,003	858	1,317	1,236
Asian %	14.6%	7.7%	6.8%	10.2%	9.7%
Black	225	92	215	154	91
Black %	1.7%	0.7%	1.7%	1.2%	0.7%

Citizen Voting Age Population (CVAP)

	1	2	3	4	5
Total CVAP	8,449	10,599	8,815	11,206	9,141
Other CVAP	5,629	8,984	6,540	8,501	7,018
Other CVAP %	66.6%	84.8%	74.2%	75.9%	76.8%
Latino CVAP	1,156	802	1,768	947	922
Latino CVAP %	13.7%	7.6%	20.1%	8.5%	10.1%
Asian CVAP	1,314	734	447	1,458	1,099
Asian CVAP %	15.6%	6.9%	5.1%	13.0%	12.0%
Black CVAP	350	79	60	300	102
Black CVAP %	4.1%	0.7%	0.7%	2.7%	1.1%

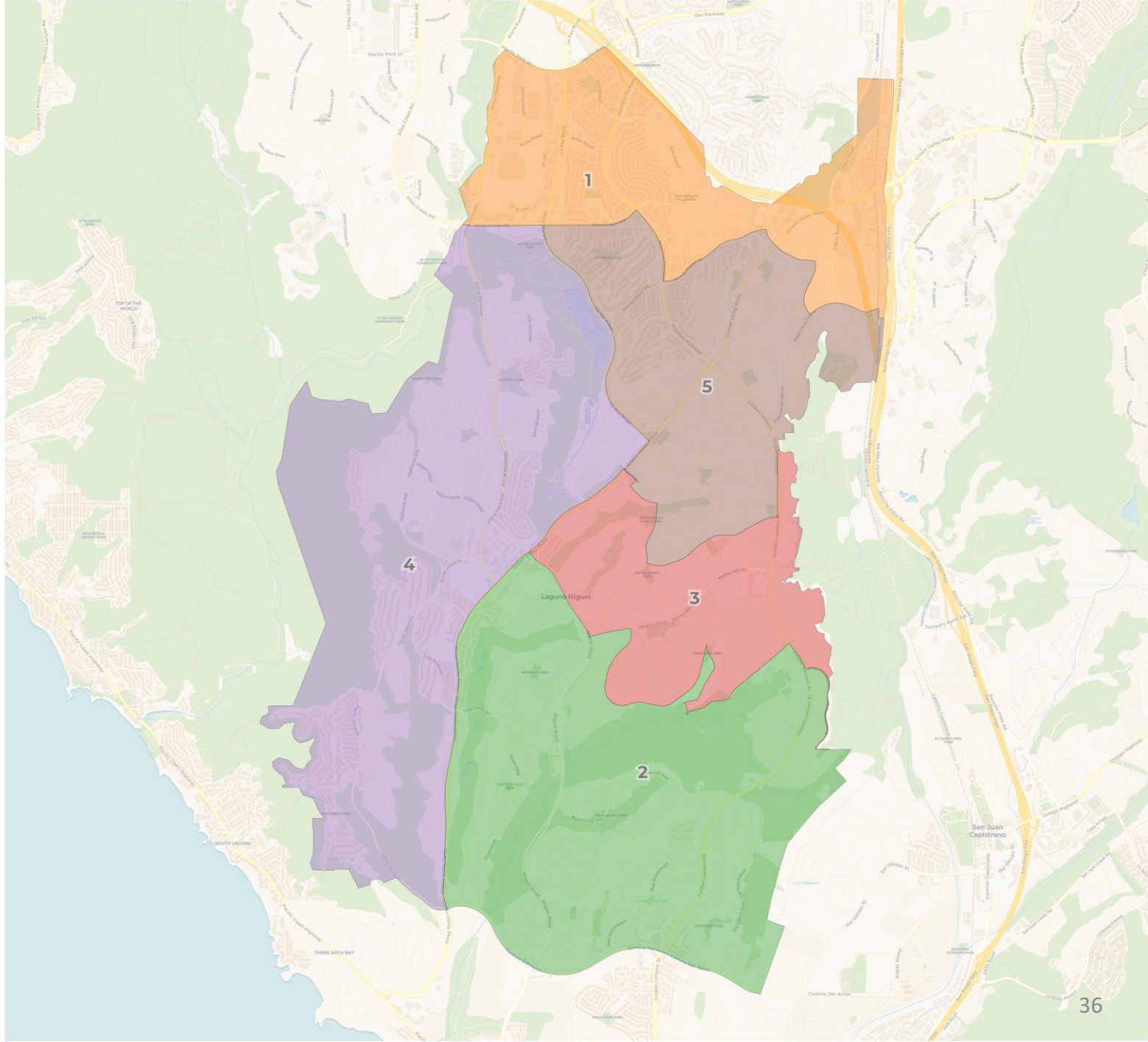


2020 Census

	1	2	3	4	5
Population	12,829	12,967	12,807	12,532	13,268
Deviation	-52	86	-74	-349	387
Deviation %	-0.4%	0.7%	-0.6%	-2.7%	3.0%
Other	9,231	8,864	10,264	8,513	9,917
Other %	72.0%	68.4%	80.1%	67.9%	74.7%
Latino	1,930	2,152	1,397	2,893	2,160
Latino %	15.0%	16.6%	10.9%	23.1%	16.3%
Asian	1,498	1,756	1,028	957	1,066
Asian %	11.7%	13.5%	8.0%	7.6%	8.0%
Black	170	195	118	169	125
Black %	1.3%	1.5%	0.9%	1.3%	0.9%

Citizen Voting Age Population (CVAP)

	1	2	3	4	5
Total CVAP	9,759	8,533	10,632	9,041	10,245
Other CVAP	7,225	5,749	8,405	7,104	8,189
Other CVAP %	74.0%	67.4%	79.1%	78.6%	79.9%
Latino CVAP	982	1,141	953	1,163	1,356
Latino CVAP %	10.1%	13.4%	9.0%	12.9%	13.2%
Asian CVAP	1,382	1,308	1,026	691	645
Asian CVAP %	14.2%	15.3%	9.7%	7.6%	6.3%
Black CVAP	170	335	248	83	55
Black CVAP %	1.7%	3.9%	2.3%	0.9%	0.5%

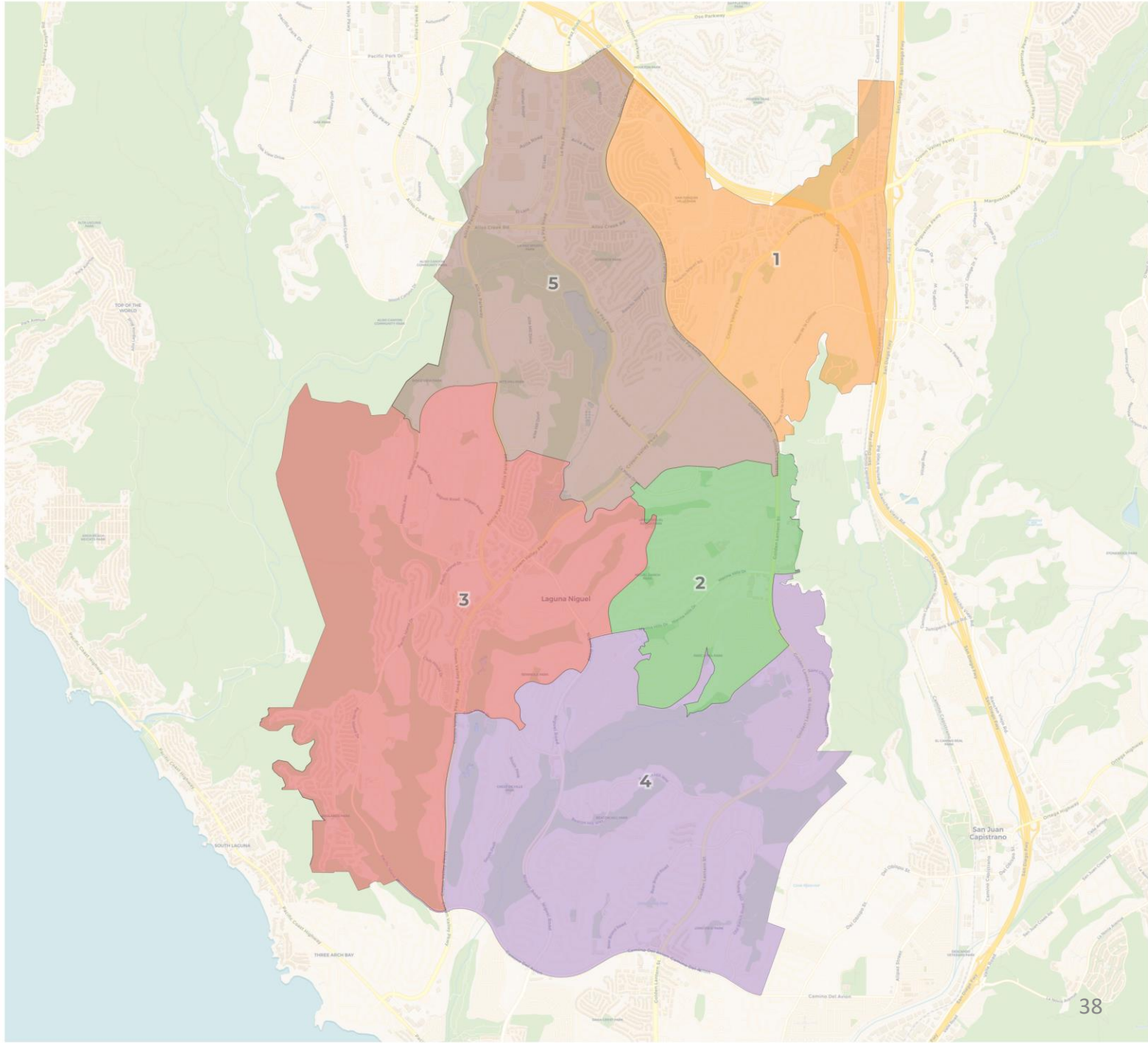


2020 Census

	1	2	3	4	5
Population	12,951	12,685	12,606	13,592	12,583
Deviation	68	-198	-277	709	-300
Deviation %	0.5%	-1.5%	-2.2%	5.5%	-2.3%
Other	8,267	10,414	7,861	10,468	9,784
Other %	63.8%	82.1%	62.4%	77.0%	77.8%
Latino	2,564	1,215	3,651	1,564	1,543
Latino %	19.8%	9.6%	29.0%	11.5%	12.3%
Asian	1,895	965	880	1,398	1,171
Asian %	14.6%	7.6%	7.0%	10.3%	9.3%
Black	225	91	214	162	85
Black %	1.7%	0.7%	1.7%	1.2%	0.7%

Citizen Voting Age Population (CVAP)

	1	2	3	4	5
Total CVAP	8,449	10,373	8,732	11,654	9,002
Other CVAP	5,629	8,777	6,524	8,765	6,977
Other CVAP %	66.6%	84.6%	74.7%	75.2%	77.5%
Latino CVAP	1,156	792	1,763	1,015	869
Latino CVAP %	13.7%	7.6%	20.2%	8.7%	9.7%
Asian CVAP	1,314	725	385	1,560	1,068
Asian CVAP %	15.6%	7.0%	4.4%	13.4%	11.9%
Black CVAP	350	79	60	314	88
Black CVAP %	4.1%	0.8%	0.7%	2.7%	1.0%

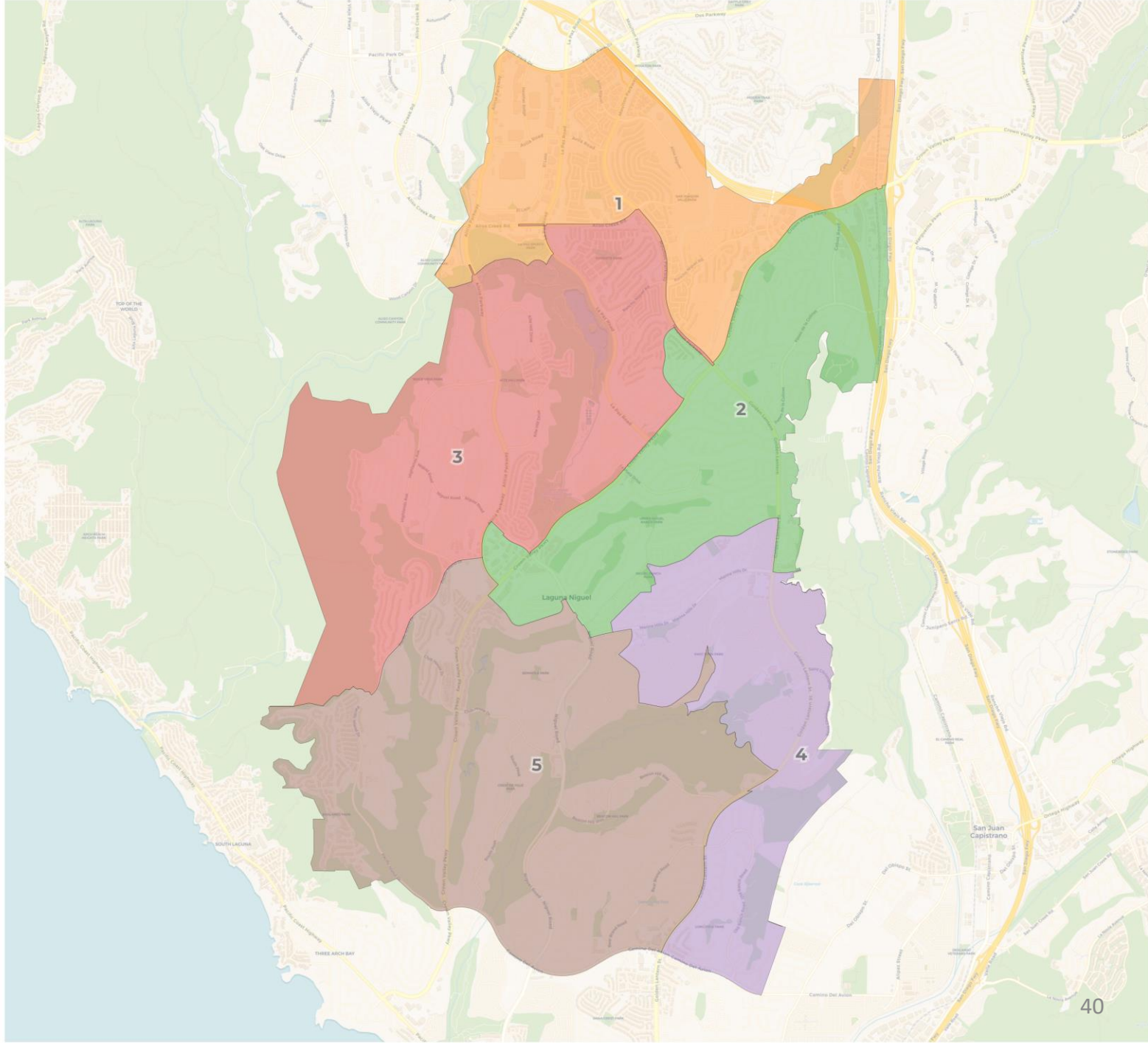


2020 Census

	1	2	3	4	5
Population	12,952	12,349	13,358	12,736	13,022
Deviation	69	-534	475	-147	139
Deviation %	0.5%	-4.1%	3.7%	-1.1%	1.1%
Other	8,854	7,551	10,449	10,430	9,510
Other %	68.4%	61.1%	78.2%	81.9%	73.0%
Latino	2,147	3,721	1,619	1,191	1,859
Latino %	16.6%	30.1%	12.1%	9.4%	14.3%
Asian	1,756	885	1,134	1,022	1,512
Asian %	13.6%	7.2%	8.5%	8.0%	11.6%
Black	195	192	156	93	141
Black %	1.5%	1.6%	1.2%	0.7%	1.1%

Citizen Voting Age Population (CVAP)

	1	2	3	4	5
Total CVAP	8,529	8,858	10,804	10,166	9,853
Other CVAP	5,745	6,505	8,387	8,727	7,308
Other CVAP %	67.4%	73.4%	77.6%	85.8%	74.2%
Latino CVAP	1,141	1,628	1,072	706	1,048
Latino CVAP %	13.4%	18.4%	9.9%	6.9%	10.6%
Asian CVAP	1,308	686	1,041	658	1,359
Asian CVAP %	15.3%	7.7%	9.6%	6.5%	13.8%
Black CVAP	335	39	304	75	138
Black CVAP %	3.9%	0.4%	2.8%	0.7%	1.4%

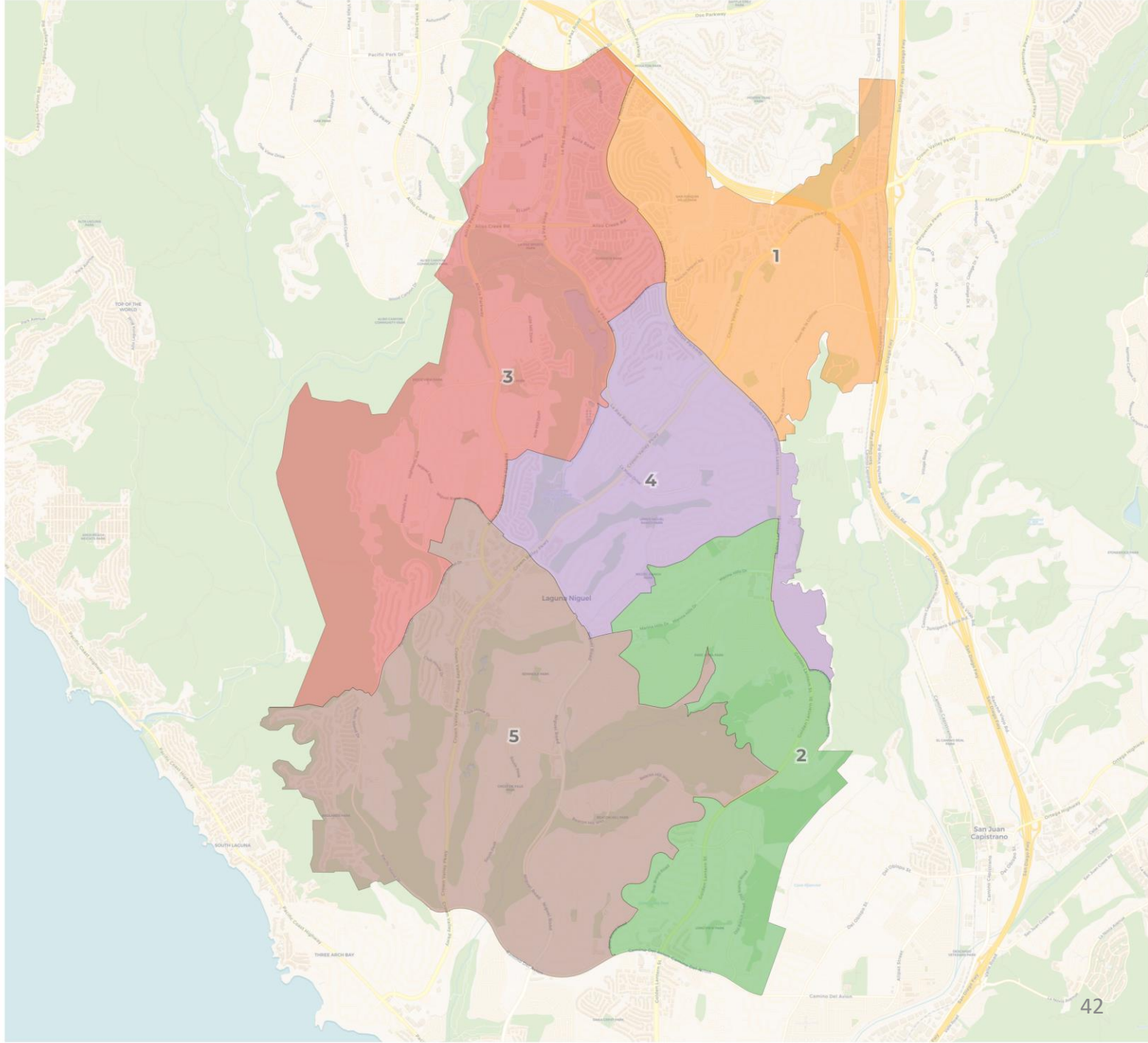


2020 Census

	1	2	3	4	5
Population	13,049	12,467	13,104	12,570	13,227
Deviation	166	-416	221	-313	344
Deviation %	1.3%	-3.2%	1.7%	-2.4%	2.7%
Other	8,421	9,471	9,974	7,964	10,964
Other %	64.5%	76.0%	76.1%	63.4%	82.9%
Latino	2,470	1,846	1,603	3,469	1,149
Latino %	18.9%	14.8%	12.2%	27.6%	8.7%
Asian	1,960	1,012	1,377	936	1,024
Asian %	15.0%	8.1%	10.5%	7.4%	7.7%
Black	198	138	150	201	90
Black %	1.5%	1.1%	1.1%	1.6%	0.7%

Citizen Voting Age Population (CVAP)

	1	2	3	4	5
Total CVAP	8,551	9,424	10,382	8,689	11,164
Other CVAP	5,871	7,256	7,515	6,471	9,559
Other CVAP %	68.7%	77.0%	72.4%	74.5%	85.6%
Latino CVAP	1,249	963	938	1,622	823
Latino CVAP %	14.6%	10.2%	9.0%	18.7%	7.4%
Asian CVAP	1,301	870	1,649	508	724
Asian CVAP %	15.2%	9.2%	15.9%	5.8%	6.5%
Black CVAP	130	335	280	88	58
Black CVAP %	1.5%	3.6%	2.7%	1.0%	0.5%

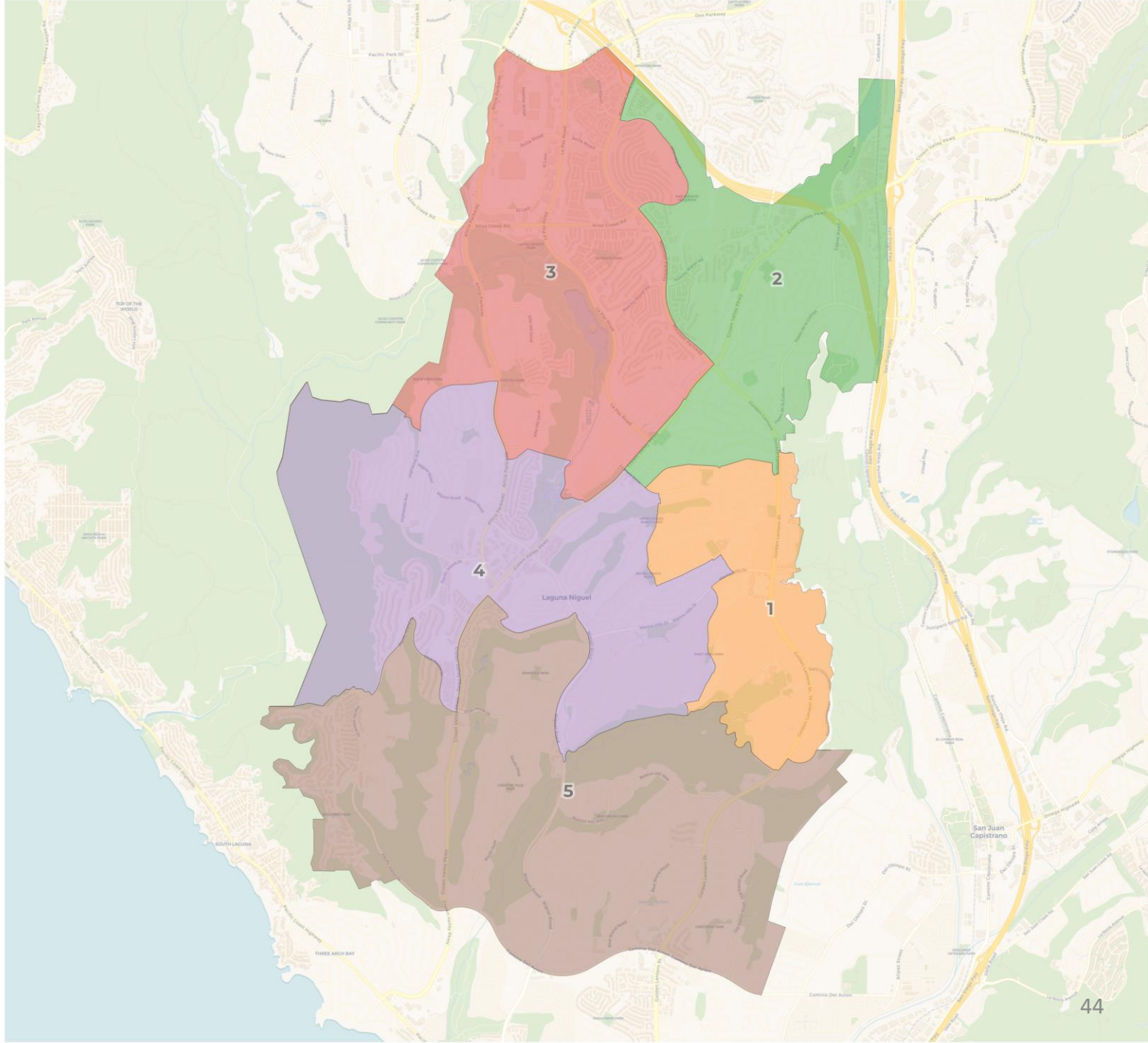


2020 Census

	1	2	3	4	5
Population	12,963	12,782	12,701	12,505	13,466
Deviation	80	-101	-182	-378	583
Deviation %	0.6%	-0.8%	-1.4%	-2.9%	4.5%
Other	8,860	8,121	9,214	9,606	10,993
Other %	68.3%	63.5%	72.5%	76.8%	81.6%
Latino	2,147	3,439	1,872	1,678	1,401
Latino %	16.6%	26.9%	14.7%	13.4%	10.4%
Asian	1,761	1,028	1,445	1,113	962
Asian %	13.6%	8.0%	11.4%	8.9%	7.1%
Black	195	194	170	108	110
Black %	1.5%	1.5%	1.3%	0.9%	0.8%

Citizen Voting Age Population (CVAP)

	1	2	3	4	5
Total CVAP	8,542	9,323	10,347	8,884	11,114
Other CVAP	5,753	6,864	7,620	7,009	9,426
Other CVAP %	67.3%	73.6%	73.6%	78.9%	84.8%
Latino CVAP	1,143	1,730	1,040	841	841
Latino CVAP %	13.4%	18.6%	10.1%	9.5%	7.6%
Asian CVAP	1,311	641	1,458	964	678
Asian CVAP %	15.3%	6.9%	14.1%	10.9%	6.1%
Black CVAP	335	88	229	70	169
Black CVAP %	3.9%	0.9%	2.2%	0.8%	1.5%

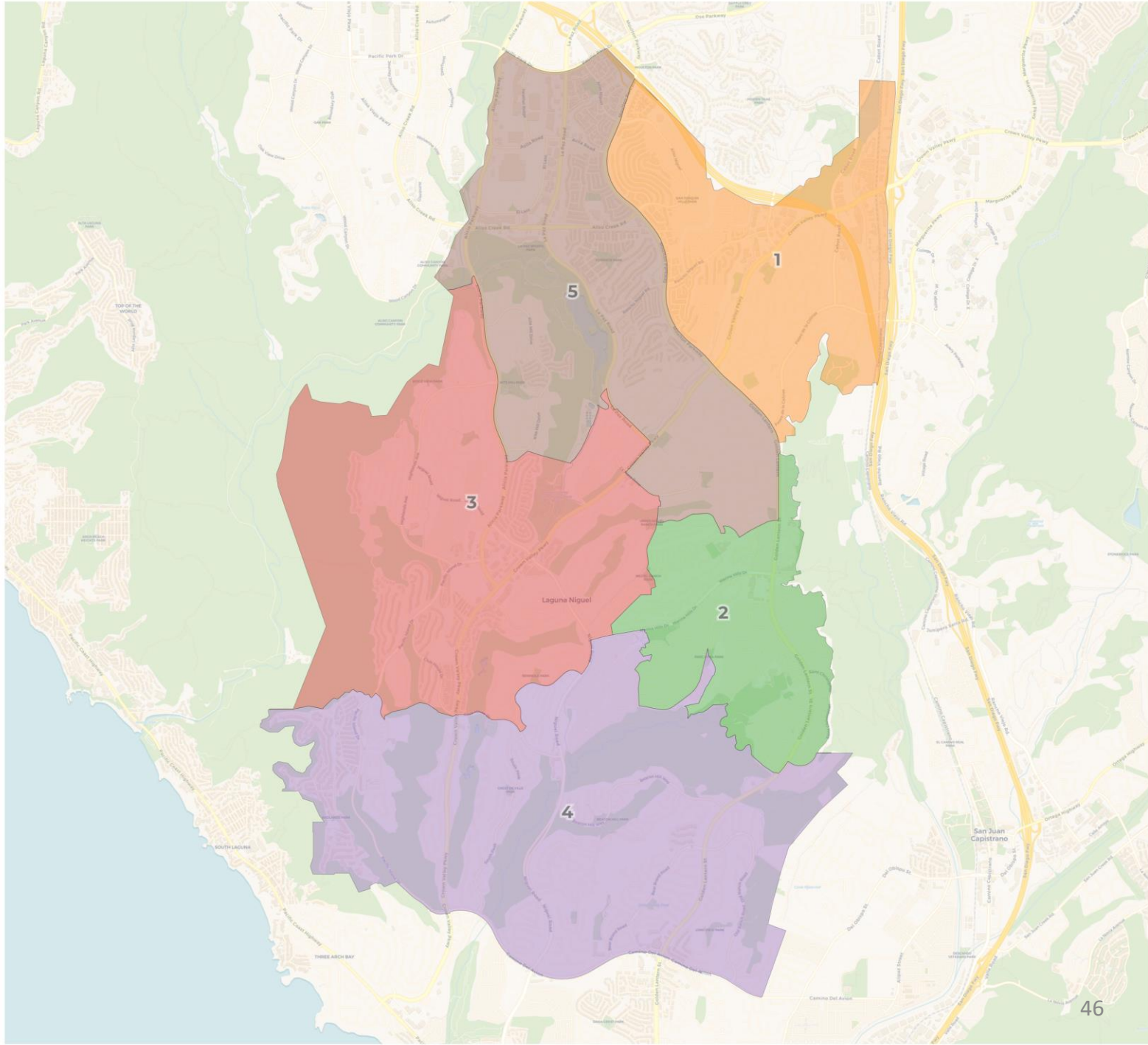


2020 Census

	1	2	3	4	5
Population	12,404	12,637	13,211	13,416	12,749
Deviation	-479	-246	328	533	-134
Deviation %	-3.7%	-1.9%	2.5%	4.1%	-1.0%
Other	7,619	8,936	9,333	10,314	10,592
Other %	61.4%	70.7%	70.6%	76.9%	83.1%
Latino	3,709	2,181	1,817	1,756	1,074
Latino %	29.9%	17.3%	13.8%	13.1%	8.4%
Asian	888	1,333	1,916	1,167	1,005
Asian %	7.2%	10.5%	14.5%	8.7%	7.9%
Black	188	187	145	179	78
Black %	1.5%	1.5%	1.1%	1.3%	0.6%

Citizen Voting Age Population (CVAP)

	1	2	3	4	5
Total CVAP	8,325	8,793	9,441	10,727	10,924
Other CVAP	6,023	6,151	6,786	8,421	9,291
Other CVAP %	72.3%	70.0%	71.9%	78.5%	85.1%
Latino CVAP	1,585	1,200	964	998	848
Latino CVAP %	19.0%	13.6%	10.2%	9.3%	7.8%
Asian CVAP	681	1,088	1,574	1,000	709
Asian CVAP %	8.2%	12.4%	16.7%	9.3%	6.5%
Black CVAP	36	354	117	308	76
Black CVAP %	0.4%	4.0%	1.2%	2.9%	0.7%

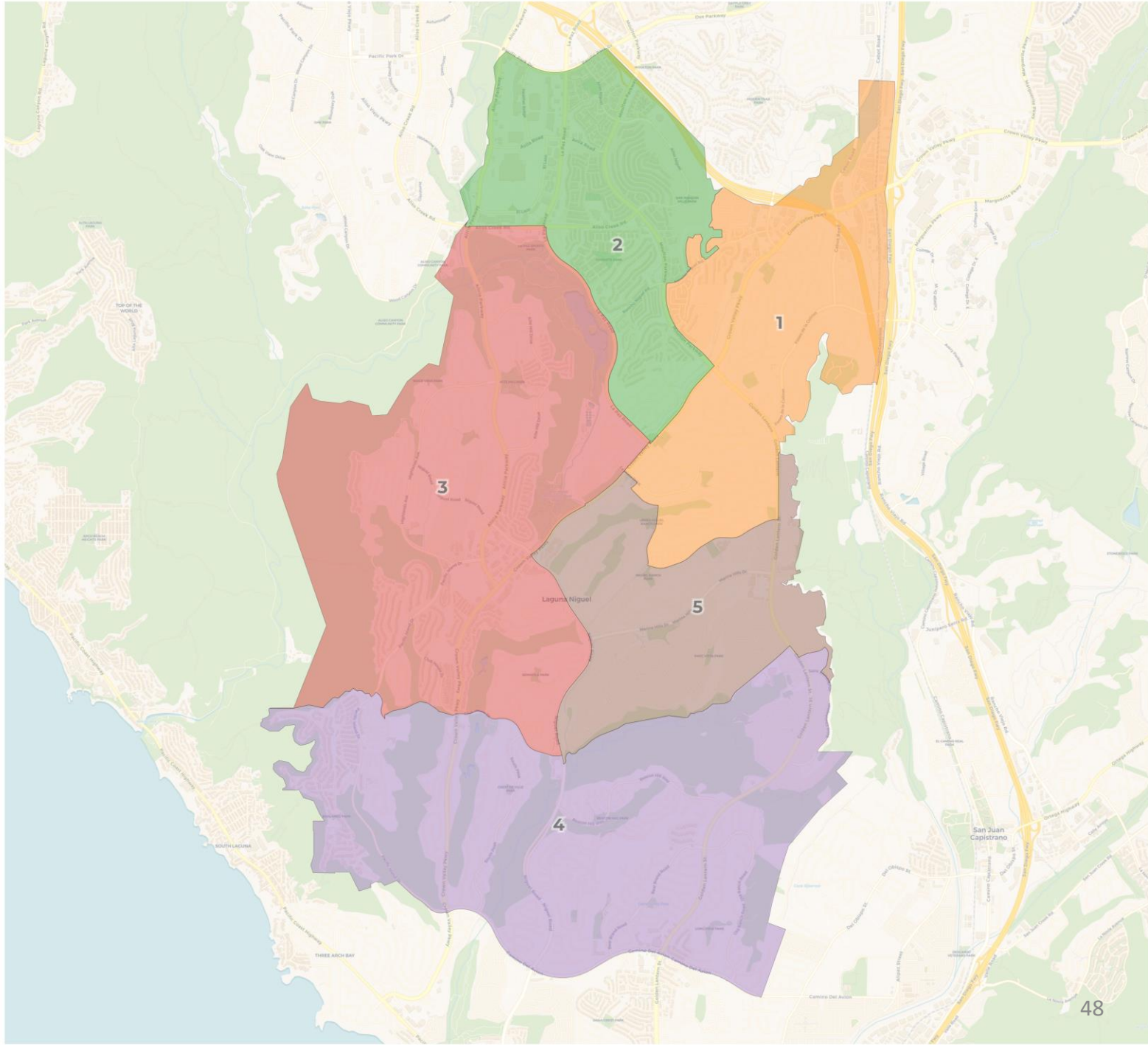


2020 Census

	1	2	3	4	5
Population	12,952	12,834	13,082	12,700	12,849
Deviation	69	-49	199	-183	-34
Deviation %	0.5%	-0.4%	1.5%	-1.4%	-0.3%
Other	8,854	7,958	9,953	10,549	9,480
Other %	68.4%	62.0%	76.1%	83.1%	73.8%
Latino	2,147	3,710	1,766	1,052	1,862
Latino %	16.6%	28.9%	13.5%	8.3%	14.5%
Asian	1,756	967	1,187	1,020	1,379
Asian %	13.6%	7.5%	9.1%	8.0%	10.7%
Black	195	199	176	79	128
Black %	1.5%	1.6%	1.3%	0.6%	1.0%

Citizen Voting Age Population (CVAP)

	1	2	3	4	5
Total CVAP	8,529	8,872	10,232	10,797	9,780
Other CVAP	5,745	6,563	7,587	9,307	7,470
Other CVAP %	67.4%	74.0%	74.1%	86.2%	76.4%
Latino CVAP	1,141	1,646	1,094	789	925
Latino CVAP %	13.4%	18.6%	10.7%	7.3%	9.5%
Asian CVAP	1,308	614	1,210	634	1,286
Asian CVAP %	15.3%	6.9%	11.8%	5.9%	13.1%
Black CVAP	335	49	341	67	99
Black CVAP %	3.9%	0.6%	3.3%	0.6%	1.0%

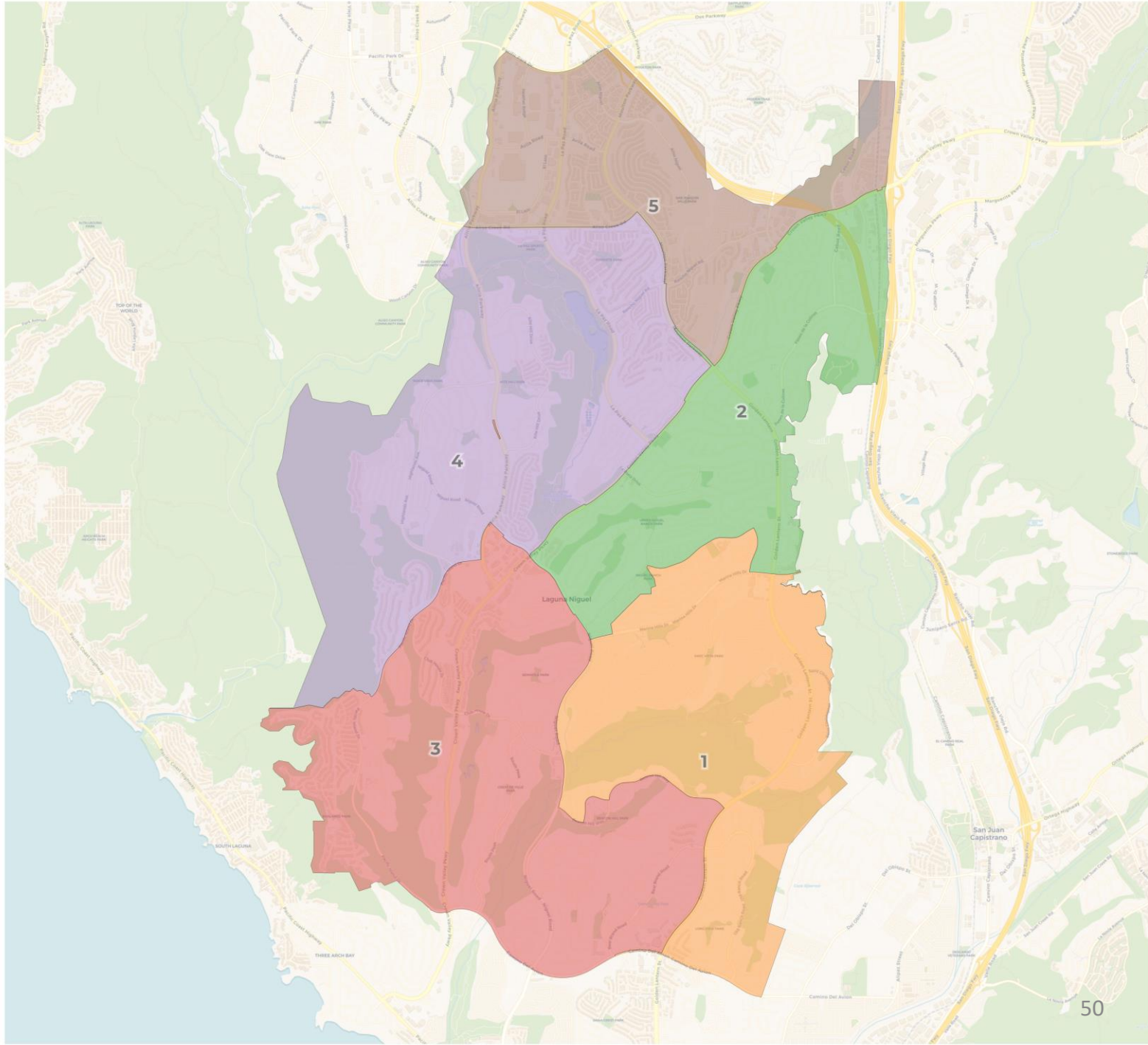


2020 Census

	1	2	3	4	5
Population	12,537	12,997	12,843	12,887	13,153
Deviation	-346	114	-40	4	270
Deviation %	-2.7%	0.9%	-0.3%	0.0%	2.1%
Other	9,357	8,694	9,786	10,622	8,335
Other %	74.6%	66.9%	76.2%	82.4%	63.4%
Latino	1,848	2,259	1,625	1,133	3,672
Latino %	14.7%	17.4%	12.7%	8.8%	27.9%
Asian	1,140	1,926	1,271	1,035	937
Asian %	9.1%	14.8%	9.9%	8.0%	7.1%
Black	192	118	161	97	209
Black %	1.5%	0.9%	1.3%	0.8%	1.6%

Citizen Voting Age Population (CVAP)

	1	2	3	4	5
Total CVAP	8,731	8,720	10,624	10,994	9,141
Other CVAP	6,567	6,039	7,725	9,450	6,891
Other CVAP %	75.2%	69.3%	72.7%	86.0%	75.4%
Latino CVAP	939	1,086	955	830	1,785
Latino CVAP %	10.8%	12.5%	9.0%	7.5%	19.5%
Asian CVAP	890	1,492	1,630	635	405
Asian CVAP %	10.2%	17.1%	15.3%	5.8%	4.4%
Black CVAP	335	103	314	79	60
Black CVAP %	3.8%	1.2%	3.0%	0.7%	0.7%

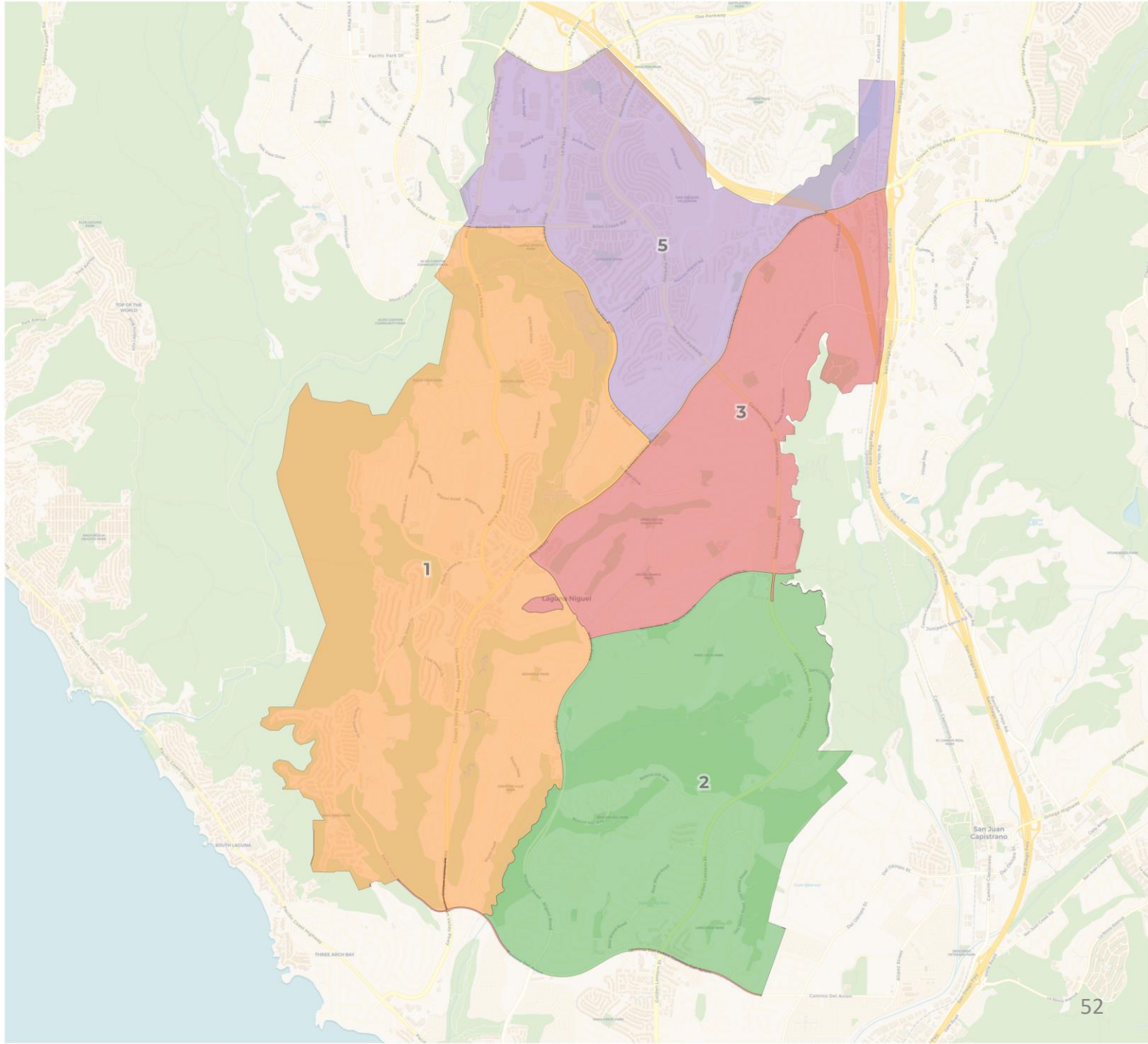


2020 Census

	1	2	3	4	5
Population	13,048	12,443	12,396	13,478	13,052
Deviation	165	-440	-487	595	169
Deviation %	1.3%	-3.4%	-3.8%	4.6%	1.3%
Other	8,781	9,132	10,199	10,262	8,420
Other %	67.3%	73.4%	82.3%	76.1%	64.5%
Latino	3,082	2,174	1,151	1,660	2,470
Latino %	23.6%	17.5%	9.3%	12.3%	18.9%
Asian	992	995	955	1,403	1,964
Asian %	7.6%	8.0%	7.7%	10.4%	15.0%
Black	193	142	91	153	198
Black %	1.5%	1.1%	0.7%	1.1%	1.5%

Citizen Voting Age Population (CVAP)

	1	2	3	4	5
Total CVAP	9,191	9,494	10,357	10,604	8,564
Other CVAP	7,158	7,118	8,823	7,694	5,879
Other CVAP %	77.9%	75.0%	85.2%	72.6%	68.6%
Latino CVAP	1,469	1,135	790	950	1,251
Latino CVAP %	16.0%	12.0%	7.6%	9.0%	14.6%
Asian CVAP	476	906	686	1,680	1,304
Asian CVAP %	5.2%	9.5%	6.6%	15.8%	15.2%
Black CVAP	88	335	58	280	130
Black CVAP %	1.0%	3.5%	0.6%	2.6%	1.5%

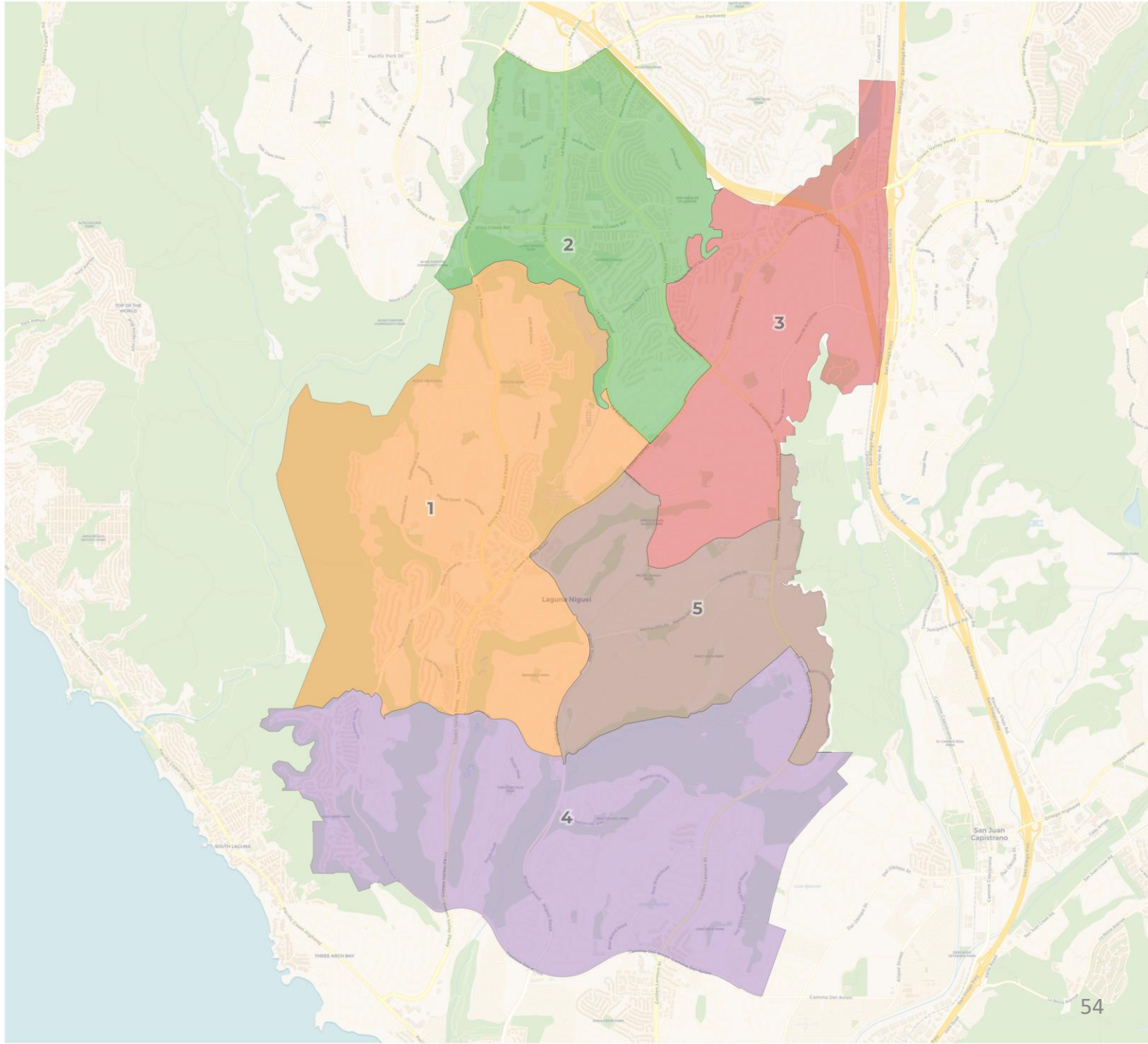


2020 Census

	1	2	3	5
Population	16,757	15,086	15,466	17,108
Deviation	653	-1,018	-638	1,004
Deviation %	4.1%	-6.3%	-4.0%	6.2%
Other	13,141	11,385	10,659	11,609
Other %	78.4%	75.5%	68.9%	67.9%
Latino	1,888	2,314	3,415	2,920
Latino %	11.3%	15.3%	22.1%	17.1%
Asian	1,549	1,230	1,173	2,357
Asian %	9.2%	8.2%	7.6%	13.8%
Black	179	157	219	222
Black %	1.1%	1.0%	1.4%	1.3%

Citizen Voting Age Population (CVAP)

	1	2	3	5
Total CVAP	14,262	11,505	11,409	11,034
Other CVAP	10,971	9,335	8,602	7,764
Other CVAP %	76.9%	81.1%	75.4%	70.4%
Latino CVAP	1,233	1,425	1,431	1,506
Latino CVAP %	8.6%	12.4%	12.5%	13.6%
Asian CVAP	1,720	690	1,008	1,634
Asian CVAP %	12.1%	6.0%	8.8%	14.8%
Black CVAP	338	55	368	130
Black CVAP %	2.4%	0.5%	3.2%	1.2%

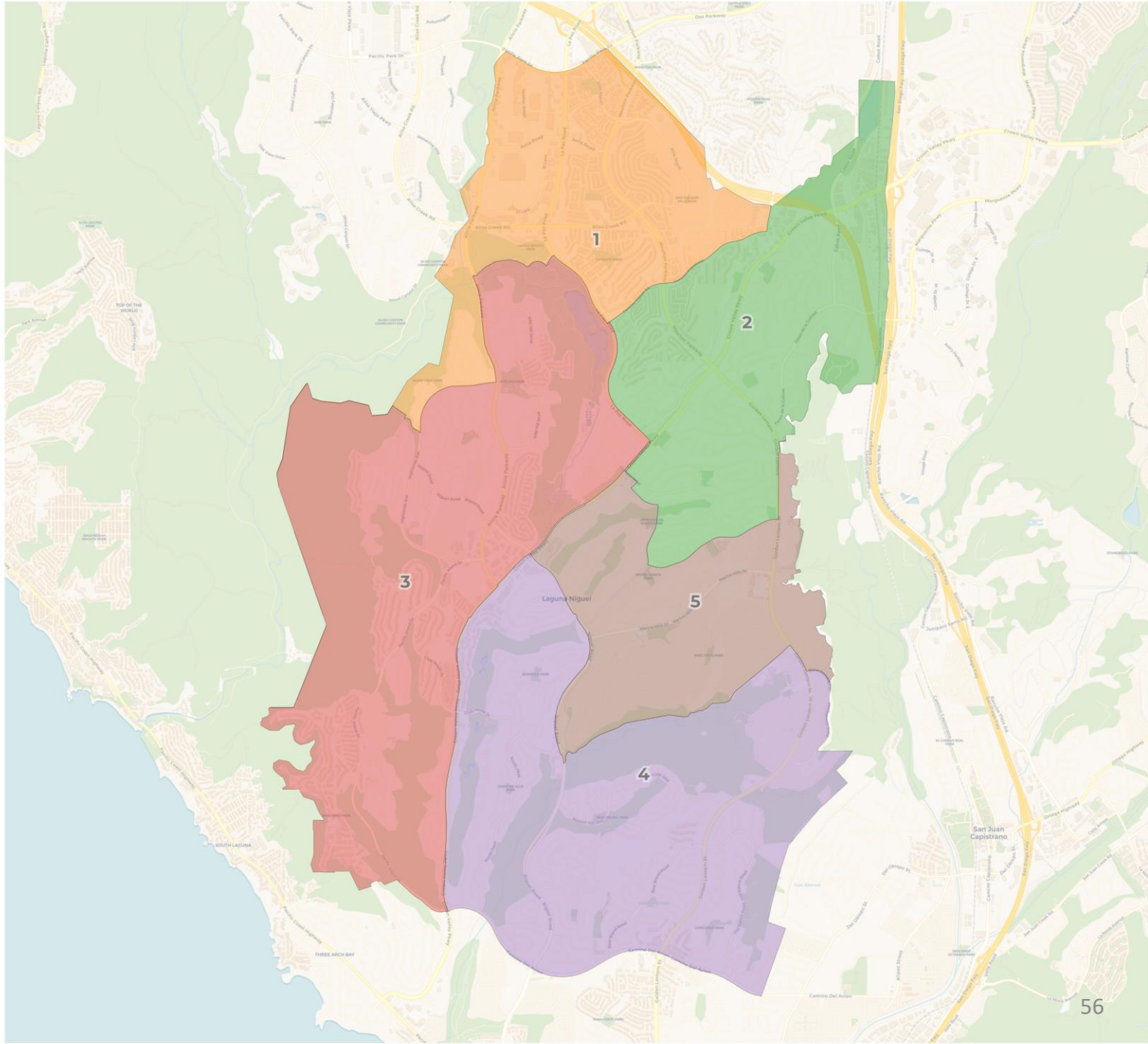


2020 Census

	1	2	3	4	5
Population	12,821	13,005	12,471	12,169	13,951
Deviation	-62	122	-412	-714	1,068
Deviation %	-0.5%	0.9%	-3.2%	-5.5%	8.3%
Other	9,774	8,701	9,311	10,056	8,952
Other %	76.2%	66.9%	74.7%	82.6%	64.2%
Latino	1,620	2,259	1,832	1,040	3,786
Latino %	12.6%	17.4%	14.7%	8.5%	27.1%
Asian	1,266	1,927	1,139	987	990
Asian %	9.9%	14.8%	9.1%	8.1%	7.1%
Black	161	118	189	86	223
Black %	1.3%	0.9%	1.5%	0.7%	1.6%

Citizen Voting Age Population (CVAP)

	1	2	3	4	5
Total CVAP	10,624	8,720	8,667	10,566	9,633
Other CVAP	7,725	6,039	6,506	9,060	7,342
Other CVAP %	72.7%	69.3%	75.1%	85.7%	76.2%
Latino CVAP	955	1,086	937	818	1,799
Latino CVAP %	9.0%	12.5%	10.8%	7.7%	18.7%
Asian CVAP	1,630	1,492	889	621	420
Asian CVAP %	15.3%	17.1%	10.3%	5.9%	4.4%
Black CVAP	314	103	335	67	72
Black CVAP %	3.0%	1.2%	3.9%	0.6%	0.7%

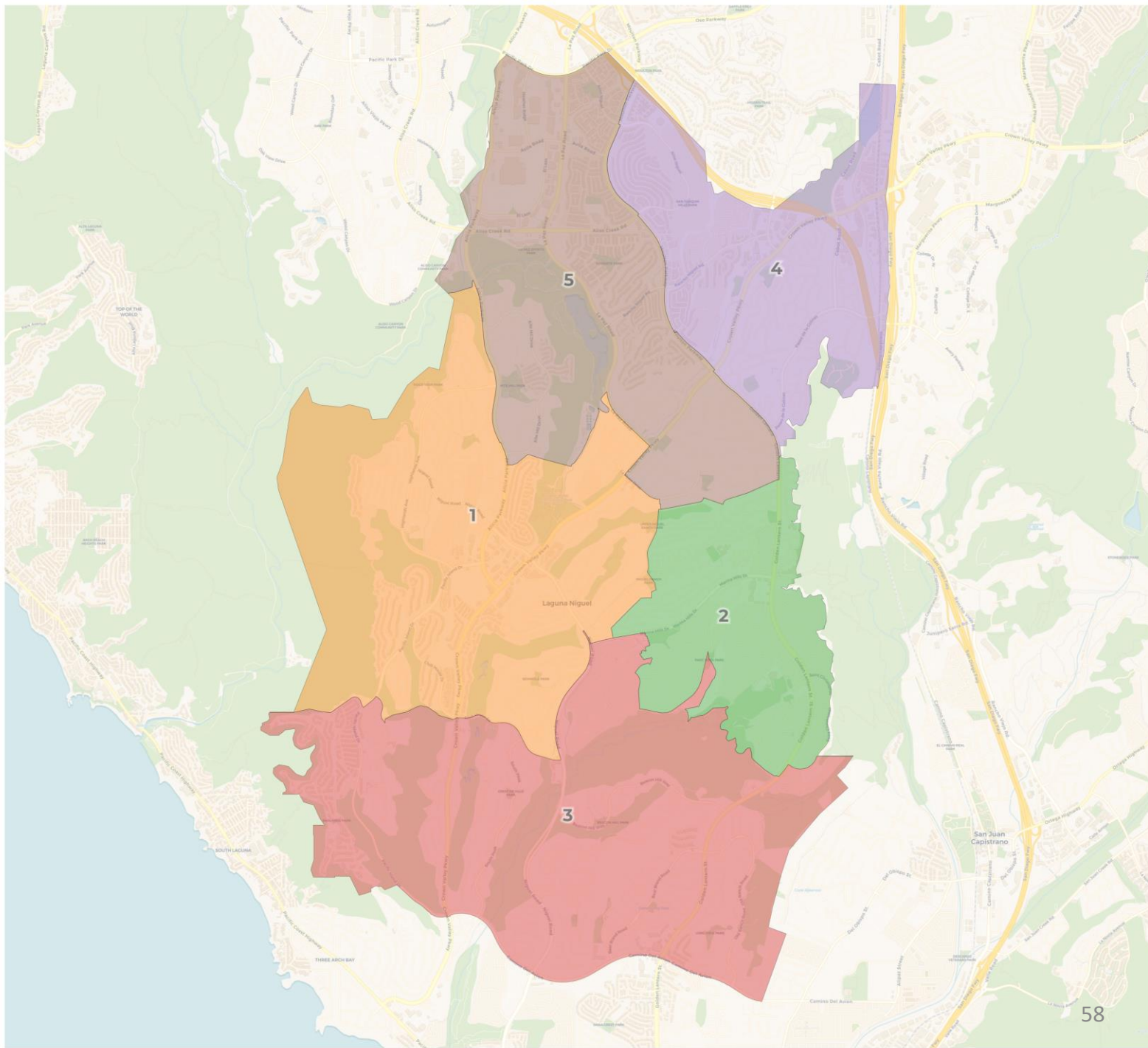


2020 Census

	1	2	3	4	5
Population	12,912	13,243	12,971	11,938	13,353
Deviation	29	360	88	-945	470
Deviation %	0.2%	2.8%	0.7%	-7.3%	3.6%
Other	8,527	9,975	10,017	9,780	8,495
Other %	66.0%	75.3%	77.2%	81.9%	63.6%
Latino	2,320	1,821	1,530	1,165	3,701
Latino %	18.0%	13.8%	11.8%	9.8%	27.7%
Asian	1,911	1,279	1,274	904	941
Asian %	14.8%	9.7%	9.8%	7.6%	7.0%
Black	154	168	150	89	216
Black %	1.2%	1.3%	1.2%	0.7%	1.6%

Citizen Voting Age Population (CVAP)

	1	2	3	4	5
Total CVAP	9,194	8,744	11,167	9,880	9,225
Other CVAP	6,258	6,717	8,396	8,326	6,975
Other CVAP %	68.1%	76.8%	75.2%	84.3%	75.6%
Latino CVAP	1,364	707	969	770	1,785
Latino CVAP %	14.8%	8.1%	8.7%	7.8%	19.3%
Asian CVAP	1,450	987	1,505	705	405
Asian CVAP %	15.8%	11.3%	13.5%	7.1%	4.4%
Black CVAP	122	333	297	79	60
Black CVAP %	1.3%	3.8%	2.7%	0.8%	0.7%

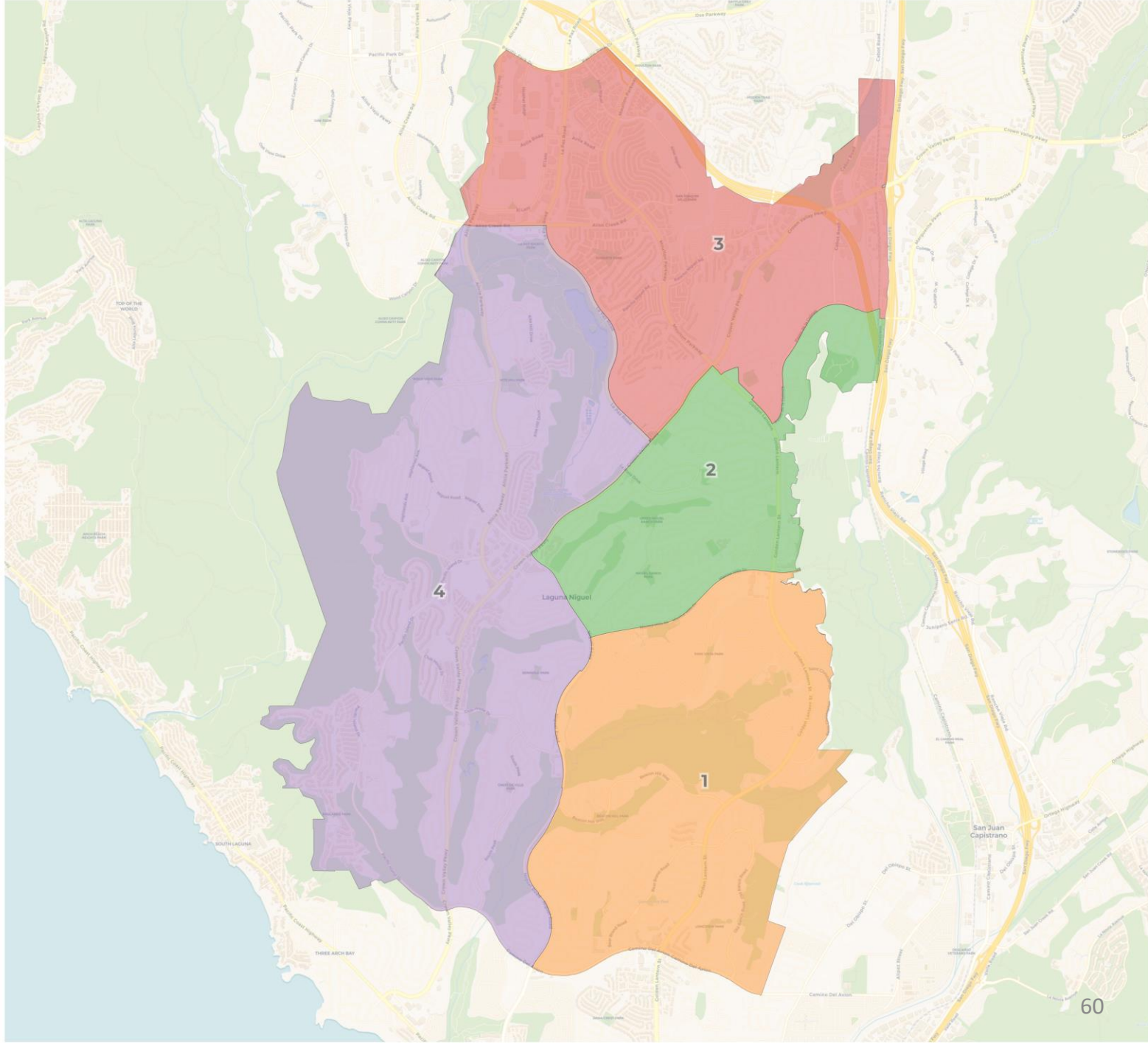


2020 Census

	1	2	3	4	5
Population	13,440	13,578	12,342	12,978	12,079
Deviation	557	695	-541	95	-804
Deviation %	4.3%	5.4%	-4.2%	0.7%	-6.2%
Other	10,260	8,539	10,242	8,870	8,883
Other %	76.3%	62.9%	83.0%	68.3%	73.5%
Latino	1,808	3,792	1,010	2,152	1,775
Latino %	13.5%	27.9%	8.2%	16.6%	14.7%
Asian	1,196	1,037	1,011	1,761	1,304
Asian %	8.9%	7.6%	8.2%	13.6%	10.8%
Black	176	210	79	195	117
Black %	1.3%	1.5%	0.6%	1.5%	1.0%

Citizen Voting Age Population (CVAP)

	1	2	3	4	5
Total CVAP	10,489	9,393	10,540	8,546	9,242
Other CVAP	7,787	6,939	9,107	5,757	7,082
Other CVAP %	74.2%	73.9%	86.4%	67.4%	76.6%
Latino CVAP	1,110	1,671	773	1,143	898
Latino CVAP %	10.6%	17.8%	7.3%	13.4%	9.7%
Asian CVAP	1,251	734	593	1,311	1,163
Asian CVAP %	11.9%	7.8%	5.6%	15.3%	12.6%
Black CVAP	341	49	67	335	99
Black CVAP %	3.3%	0.5%	0.6%	3.9%	1.1%



2020 Census

	1	2	3	4
Population	14,501	12,485	19,948	17,483
Deviation	-1,603	-3,619	3,844	1,379
Deviation %	-10.0%	-22.5%	23.9%	8.6%
Other	10,884	8,451	13,709	13,750
Other %	75.1%	67.7%	68.7%	78.6%
Latino	2,274	2,954	3,363	1,946
Latino %	15.7%	23.7%	16.9%	11.1%
Asian	1,204	922	2,597	1,586
Asian %	8.3%	7.4%	13.0%	9.1%
Black	139	158	279	201
Black %	1.0%	1.3%	1.4%	1.1%

Citizen Voting Age Population (CVAP)

	1	2	3	4
Total CVAP	11,066	9,407	12,964	14,773
Other CVAP	8,936	7,266	9,035	11,435
Other CVAP %	80.8%	77.2%	69.7%	77.4%
Latino CVAP	1,394	1,244	1,686	1,271
Latino CVAP %	12.6%	13.2%	13.0%	8.6%
Asian CVAP	681	813	1,829	1,729
Asian CVAP %	6.2%	8.6%	14.1%	11.7%
Black CVAP	55	84	414	338
Black CVAP %	0.5%	0.9%	3.2%	2.3%

