

# Orange County Fire Authority



**Community Risk Reduction**



*Get Wildfire Ready*

# Are You Wildfire Ready?

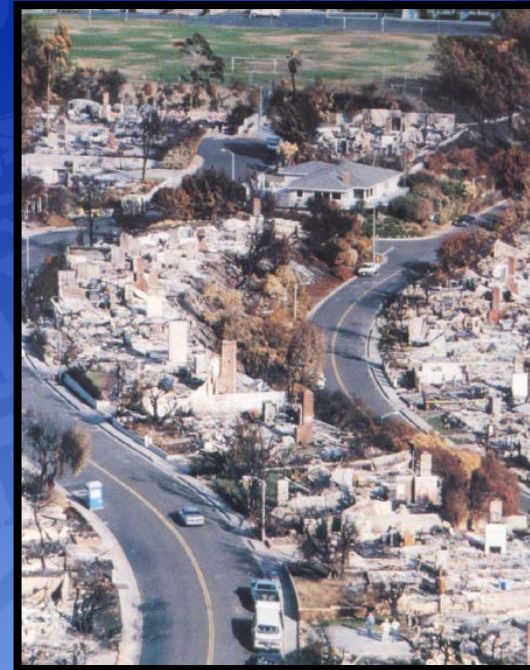




# The Impact Can Be Mitigated

How you prepare can make a difference

- Understand your situation
- Create defensible space
- Harden your home



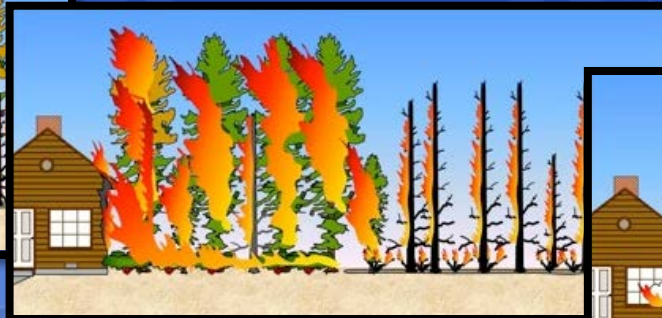
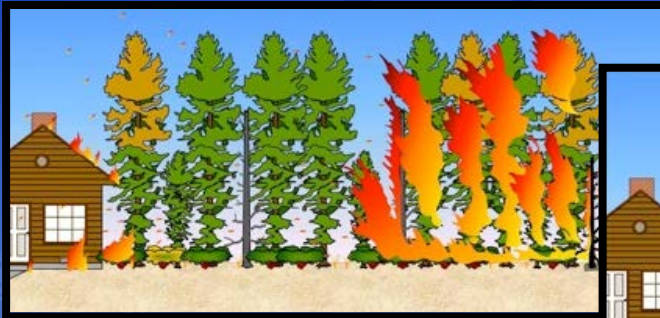


# Basics

Three basic types of wildfire exposures

- Embers (firebrands)
- Direct flame contact
- Radiant heat

Home Ignition Zone



# Is Your Home Ready?



## HARDEN YOUR HOME

### Areas of vulnerability

- The first 5 feet around your home, the Home Ignition Zone
- Roof and gutters
- Eaves
- Vents
- Windows
- Exterior
- Decks and patio covers
- Fences
- Trees, shrubs, & plants
- **Be Ember Aware!**



# Is Your Yard Ready?

Clear dead leaves/needles from roof & gutters

Vegetation

- Utilize drought tolerant, fire resistive plants
- Remove undesirables

Yard structures

- Patio Covers
- Fences
- Trellises
- Gazebos
- Play equipment

Storage

- Store combustibles away from home
- Trashcans closed and separated



# Grant Eligibility

- State Agencies
- Federal Agencies
- Native American Tribes
- Joint Powers Authority (JPA) if the entities involved are eligible applicants
- Local agencies, including:
  - City, county, or city and county
  - Fire protection districts
  - Community services districts
  - Water districts or resource conservation districts
  - Special districts
- Certified local conservation corps
- Fire Safe Councils with a 501(c)(3) designation
- Other qualified non-profit organizations with a 501(c)(3) designation

# Applicants may not be one of the following:

- A privately held for-profit company or corporation
- Individual landowners requesting a grant specifically for a project to be completed on only their own land
- Homeowners' associations or other associations unless they have 501(c)(3) non-profit status. Typical HOA status is 501(c)(4 or 7)



# Examples of eligible costs include, but are not limited to:

- Removal of dead, dying or diseased trees posing an imminent threat to public rights-of way and public infrastructure, which may include trees on private property
- Contracted tree removal, transportation, holding site fees, and disposal
- Costs that are necessary and prudent to the accomplishment of the project, e.g.
  - Equipment leased to perform work on project
  - Thinning contractors
  - Fuel and Maintenance
  - CEQA/NEPA Costs

# Success Story

## Santiago Canyon Estates HOA - Silverado Canyon

- NFPA recognized Fire Wise USA Community
- Worked with the East Orange County Canyons Fire Safe Council





# Get *Set*...Prepare your Family

Put your plan together

- Plan escape routes
- Leave to a predetermined location

Gather your emergency supplies

- People and Pets
- Papers
- Prescriptions
- Pictures
- PC
- Plastic



# Get Set...Fire Approaching

## Outdoors:

- Gather flammable items from exterior of the house (inside or in the pool)
- Connect garden hoses to taps
- Don't leave water running
- Patrol your property to extinguish all small fires



## Indoors:

- Shut all windows and doors
- Move furniture away from windows and doors
- Shut off the air conditioning





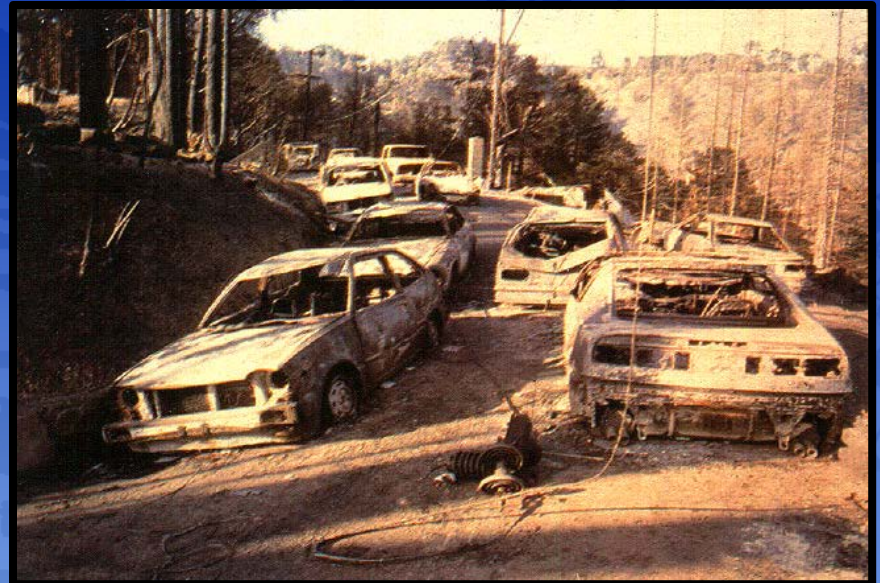
# Get Set...Fire Approaching

- Leave before you are told
- Take your kit and valuables
- Utilize your practiced evacuation routes
- Go to meeting location
- **Don't wait!**



*...Go!*

- Don't get caught in fire, smoke, congestion
- Don't endanger yourself or responders
- Dress appropriately





# Home Assessment

Please share this information with friends and neighbors.

Sign up for a free Home Assessment:

Call (714) 573-6774 or email [RSGOC@ocfa.org](mailto:RSGOC@ocfa.org)

A graphic for a wildfire home assessment. The left side features a black background with a bright orange and yellow wildfire at the top. Below the fire, the text "READY, SET, GO!" is written in a small, white, sans-serif font, followed by "HOME ASSESSMENT" in a large, bold, white, distressed font. The right side of the graphic shows a photograph of a two-story house with a red roof, partially obscured by a large, yellow and white assessment checklist on a clipboard. At the bottom, an orange banner contains the text: "A Wildfire Home Assessment is a meeting at your home with a Fire Department representative, who will give you tips on how to better protect your home from a wildfire."

**READY, SET, GO!**  
**HOME ASSESSMENT**

A Wildfire Home Assessment is a meeting at your home with a Fire Department representative, who will give you tips on how to better protect your home from a wildfire.

**READY, SET, GO!**